



NBT Contracting Est.

Landscape Company Profile

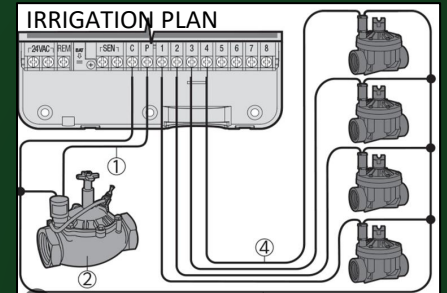




Table of Contents



- About Our Company
 - Our mission
 - Our vision
 - Our objective
 - Our values
 - Our resources
 - Classification
 - Our services
 - Landscaping
 - Our concern
 - Human resources
 - Designing
 - Project Plans and Render Design
 - Irrigation System
 - Site Preparation & Execution Works
 - Water Features
 - Executed Projects
 - Garden maintenance
 - Nursery
 - Maintenance cleaning and operation
 - Performance Certificates
 - Organization Chart
 - Our Location
 - Documents
- 
- 



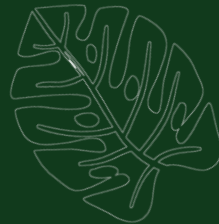

About Our Company

NBT Contracting Est. (Formerly Inshaat Contracting Est.) would have the honor to provide you its prequalification profile to present you a clear image of its activities and fields of work.

We have the human resources, equipment's and technical experience of renovation works, landscaping works, maintenance, cleaning and operation works.

During the past years our establishment executed a lot of projects relating to landscape fields; these projects included various capacities. We have succeeded significantly and obtained good experience in these fields.

Accordingly, if you give us an opportunity to serve you, we shall provide you with our best services to satisfy your requirements.





Our mission:

Our mission concentrates on the customer interest as a priority before realizing the purposeful profit target through practicing the career, providing specialized services, etc. using the most updated technologies. This takes place sincerely, respectfully and professionally through our practices to transferring and developing technology in a way suitable to our related fields.

Our Vision:

Building customers base in Arab Nations, maintaining good relations with customers and continue to develop our resources and serve the community.



Our Objectives:

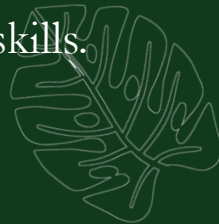
- Our main objective is to provide our customers with distinguished services because we believe that we are not alone in this field, but we have other competitive leading companies and establishments in the same field. We shall maintain this leadership in the present and in the future.

Our Values:

- Honesty: (we depend on accurate execution, studying all aspects and requirements of the work and client).
- Truth: our professional performance reflects our true works in enhancing our image.
- Respect: We believe in the role of our clients and partners to realize the mutual advantages.
- Quality: We use the best specialized partners to participate with us and realize the purposeful works.
- Professionalism: Our creative works realize the high-level services required by the community.
- Control: our sustainable efforts ensure our commitment to realize the fixed long period goals represented in the leadership in all the related fields.



Our Resources:

- Global Technology Customer's satisfaction Our partners in the work Our public relations
 - Professional Human Resources Our success in our previous projects Our confidence in our abilities and skills.
- 

Company Classification

NBT Contracting Est. is classified with many according to Saudi Classification System and its classification as follows:

| FIELDS | CLASSIFICATION |
|-------------------------------|-----------------|
| Building | 4 th |
| Building Maintenance | 3 rd |
| Gardening and Site organizing | 2 nd |
| Roads | 5 th |
| Water and Sanitation Works | 5 th |
| Electrical Works | 5 th |



OUR SERVICES: The activities Landscape and Maintenance practiced by NBT at present are following services:

- Softscaping
- Irrigation System
- Hardscaping
- MEP and Cleaning



Landscaping



NBT Establishment is specialized in presenting creative ideas and professional consulting through innovation, skillful design, execution and promotion in the field of gardens design and landscaping. These works require comprehensive knowledge of plants, shapes, ways of planting, their roses color, their suitable place, etc. This will be achieved through the good experience and lofty imagination to link these aspects together giving the garden a beautiful view. We are committed to provide our respected customers full project details, execution period and best project costs with best price.



Our team provides alternative designs and options to clients, for them to choose what satisfy them most.






Our concerned goals:

- Purification of the environment through minimizing industrial contamination resulting from soils and gases of the factories and other chemical components.
- Combating and weakening strong winds and sandstorms through fixing the soils with plants.
- Rationalization of water consumption, time and effort through installing automatic irrigation networks.
- Decreasing the temperatures through installation of mist networks.
- Commitment to conditions, criteria, specifications and reliable resources of producers and suppliers in addition to material quality conforming to relating specifications.



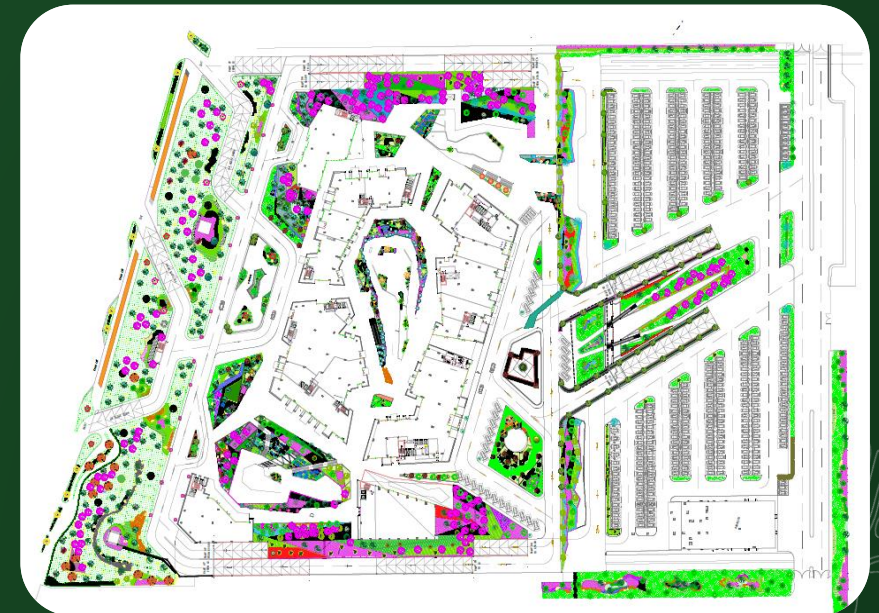
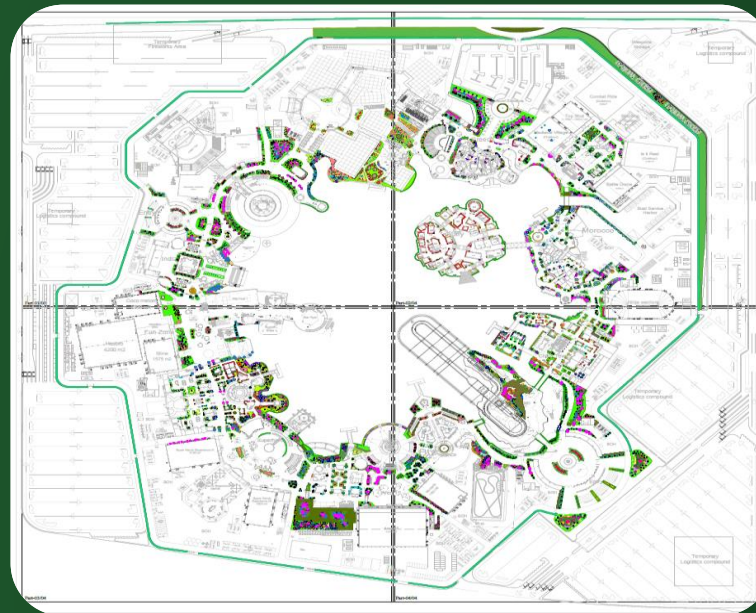
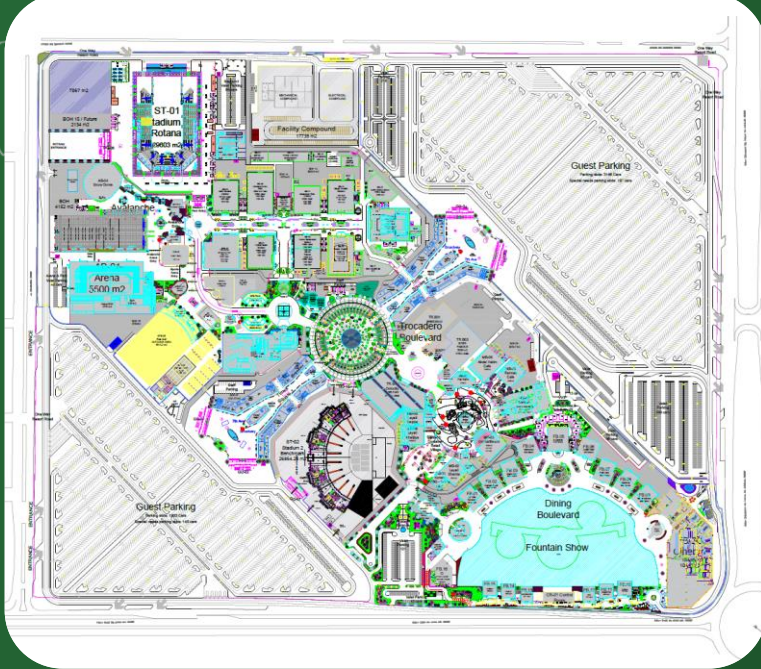
Human Resources:

- Our team are included on experienced engineers, designers and technicians; they depend on the creative methods to promote the work quality and save time.
- 

Designing

NBT Contracting Est. does professional designs for various projects in Landscape field. As garden, recreation and landscaping projects along with these it prepares external designs, environmental restorations by its experienced, specialist and high efficiency engineers through studied scientific methods and that is through.

- Site inspection and preparation of report for clients according to their needs.
- Presentation of essential studies for determination of intervention area.
- Designing and executing of project and presenting to clients for study and credence.





PROJECT PLANS

CONTRACTING

تخطيط المشاريع

PROJECT PLANS

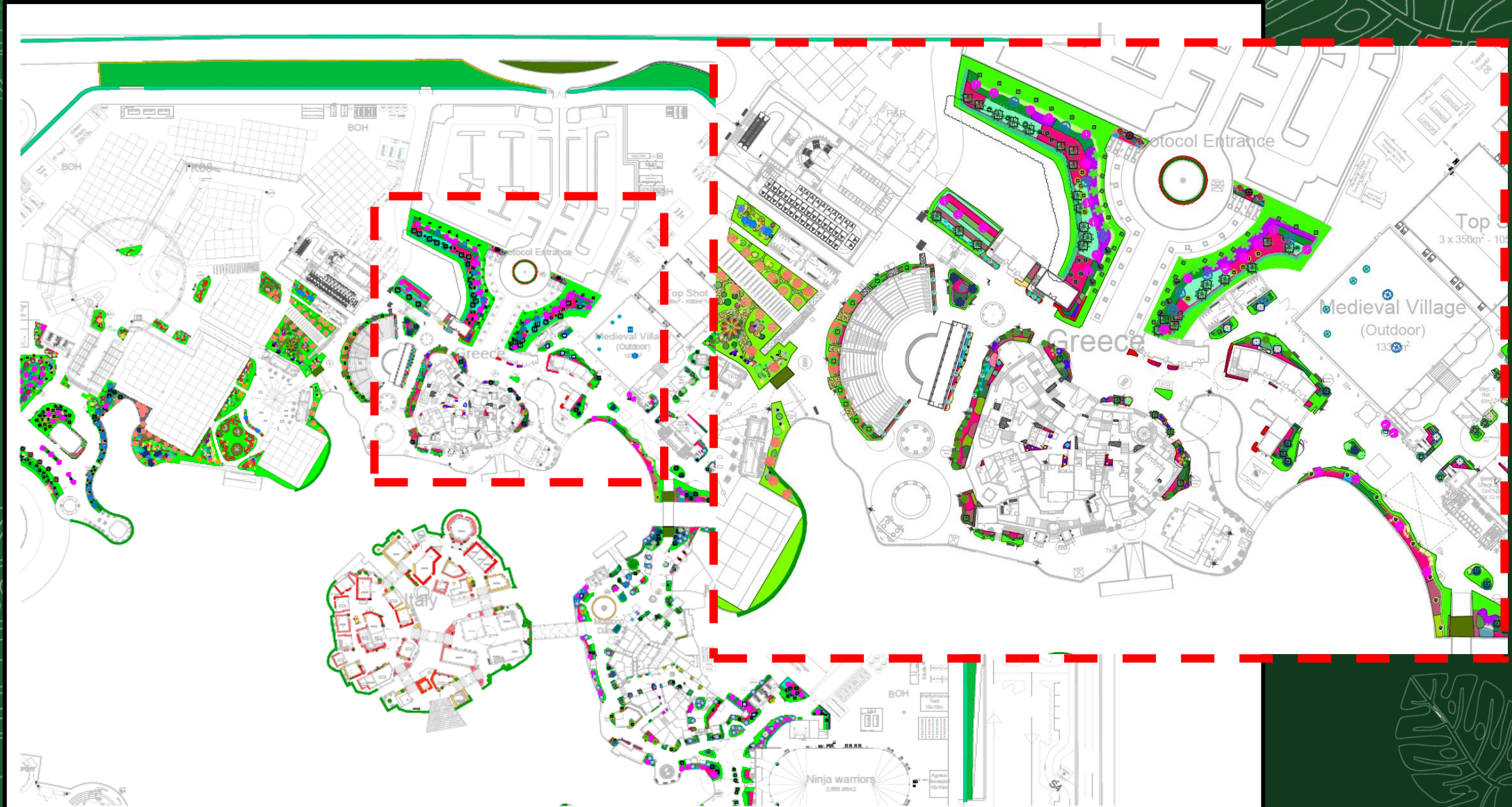
Boulevard World, Riyadh KSA



PROJECT PLANS

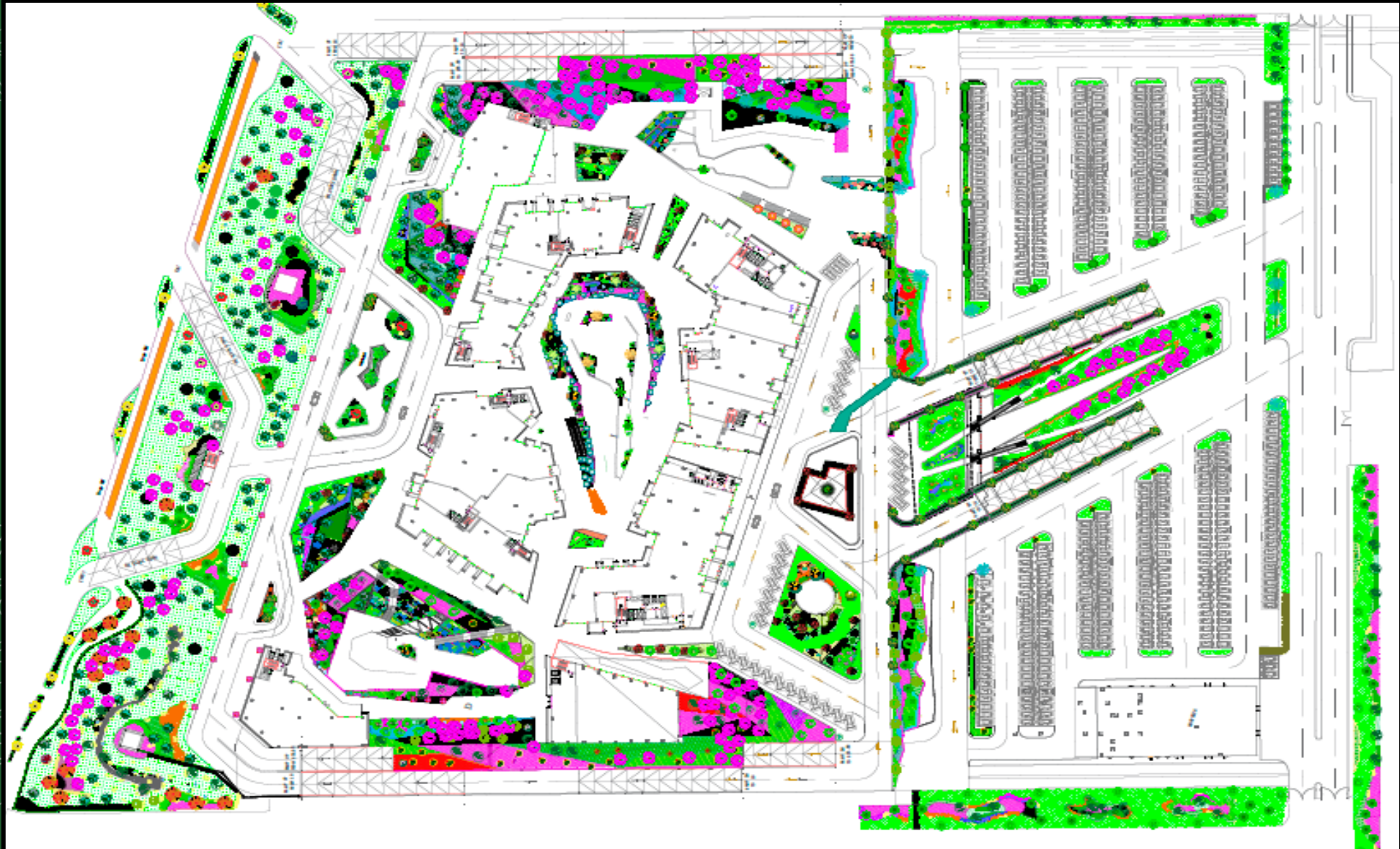
Boulevard World, Riyadh KSA





PROJECT PLANS

Via Riyadh, Riyadh KSA



Via Riyadh
Riyadh, KSA





3D RENDER DESIGN

Via Riyadh
Riyadh, KSA



PROJECT PLANS

Via Riyadh, Riyadh KSA

DESIGN CONCEPT



LANDSCAPE AREAS



PROPOSED DESIGN



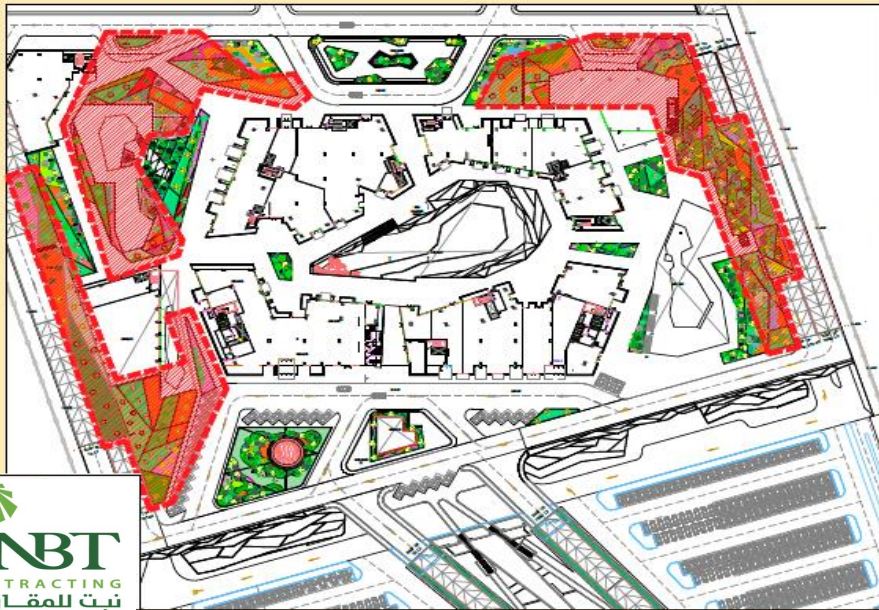
PROJECT PLANS

Via Riyadh, Riyadh KSA

DESIGN CONCEPT



LANDSCAPE AREAS

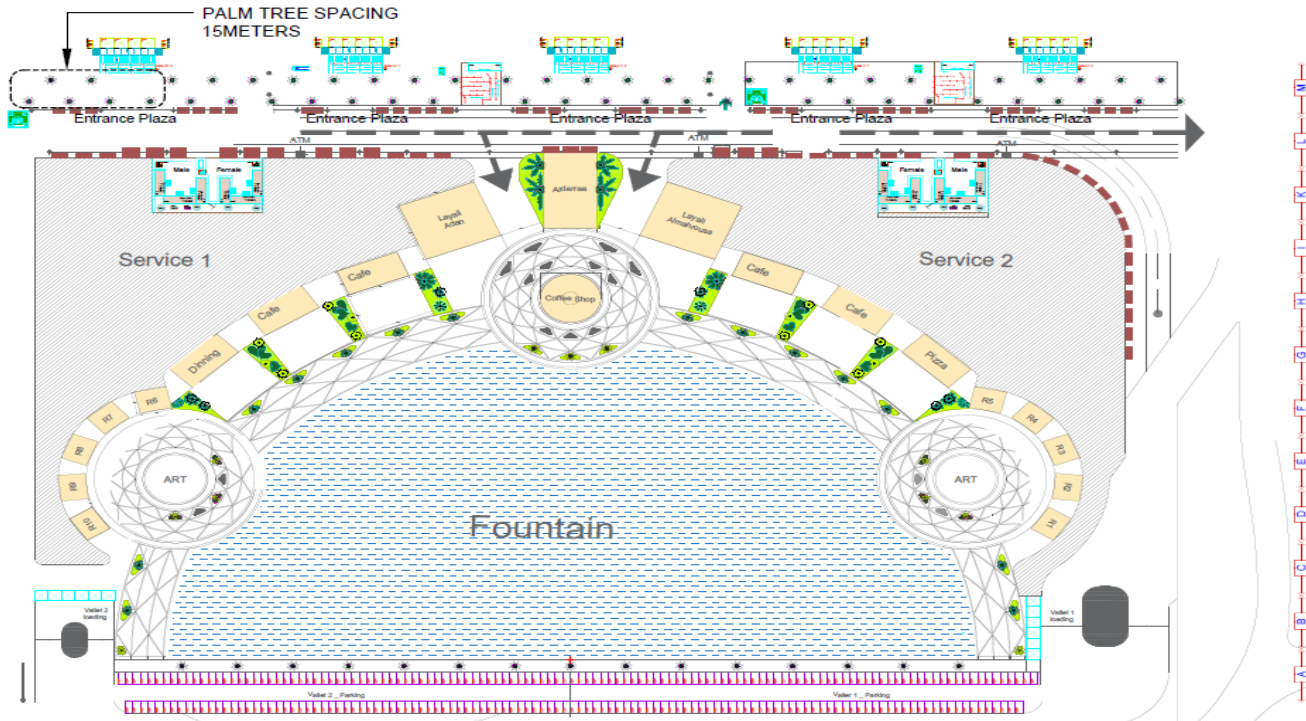


PROPOSED DESIGN



PROJECT PLANS

Boulevard City, Riyadh KSA



MASTER LANDSCAPE PLAN - FOUNTAIN AREA
PLANTING CONCEPT



PROJECT PLANS

Abha, Al Ghoniem Roundabout, Amana Aseer













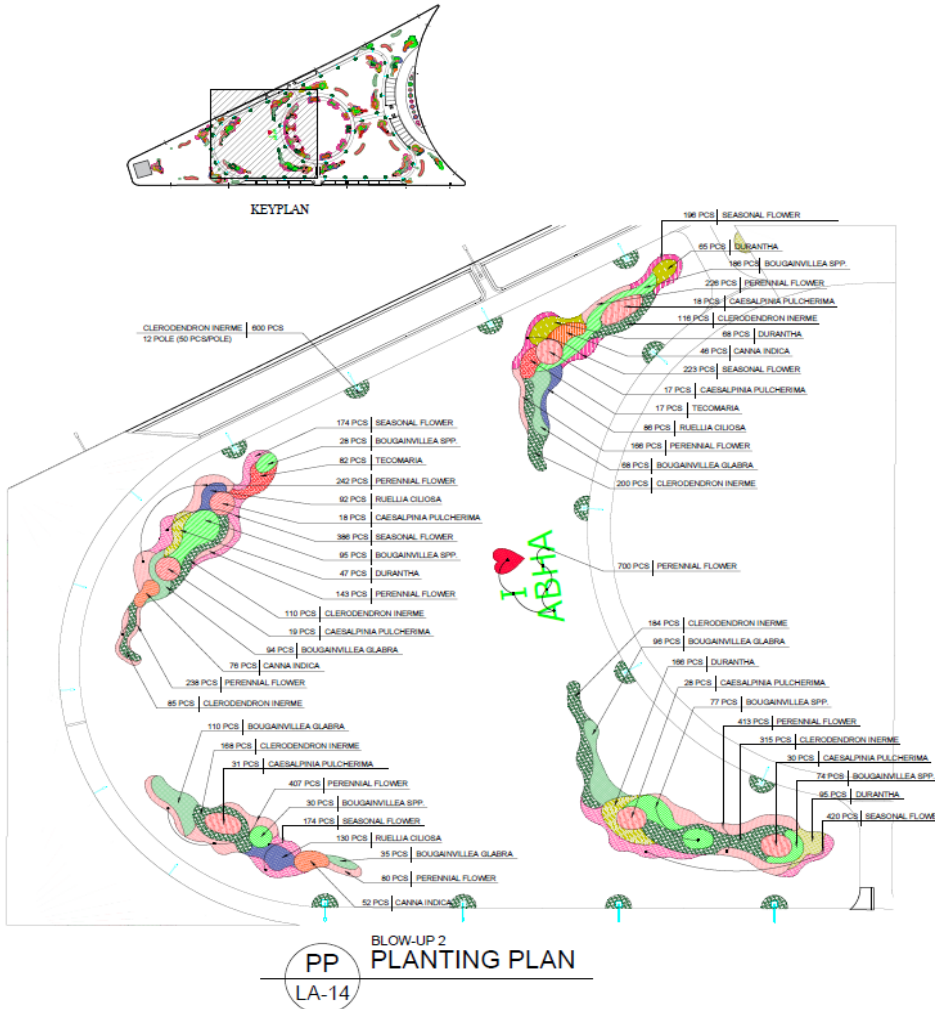
PROJECT PLANS

Abha, Al Ghoniem Roundabout, Amana Aseer













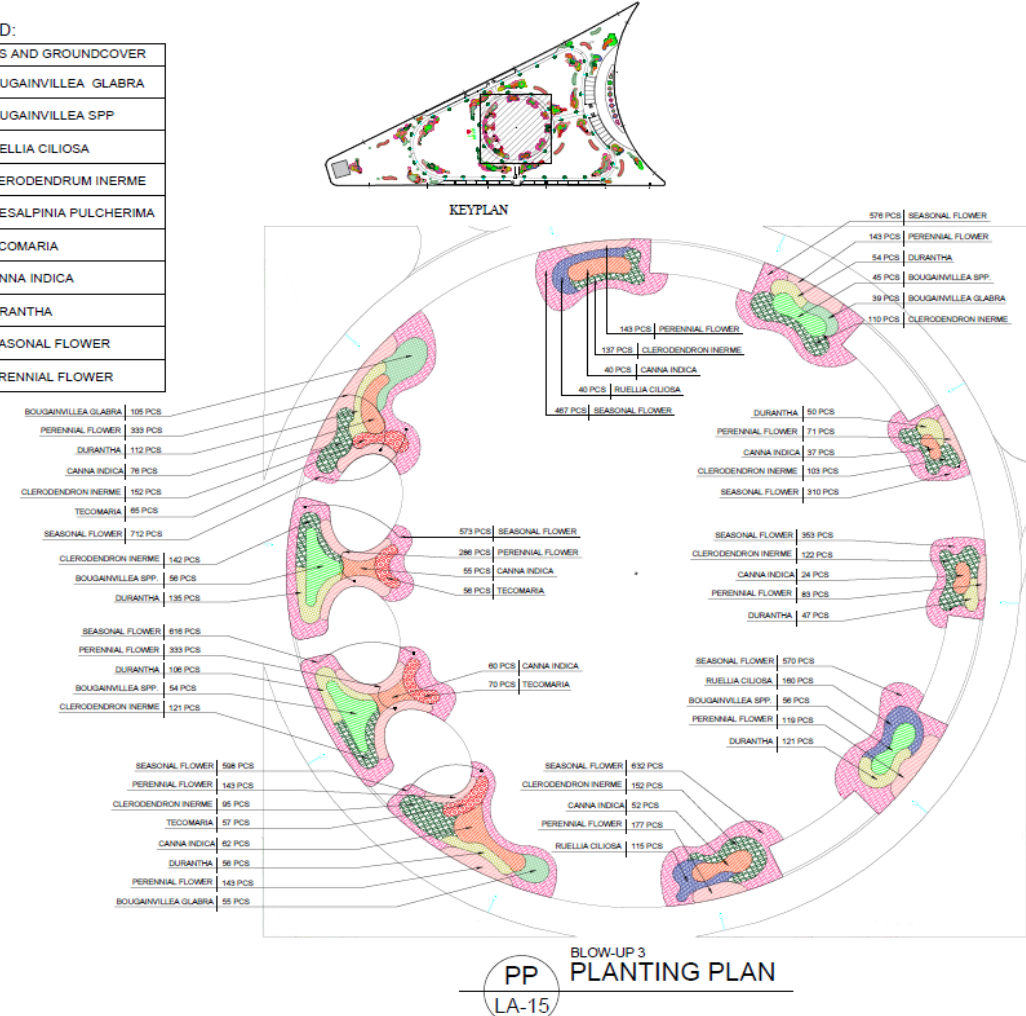
LEGEND:

| SHRUBS AND GROUNDCOVER | |
|---|------------------------|
|  | BOUGAINVILLEA GLABRA |
|  | BOUGAINVILLEA SPP |
|  | RUPELLIA CILIOSA |
|  | CLERODENDRUM INERME |
|  | CAESALPINIA PULCHERIMA |
|  | TECOMARIA |
|  | CANNA INDICA |
|  | DURANTHA |
|  | SEASONAL FLOWER |
|  | PERENNIAL FLOWER |



LEGEND:

| SHRUBS AND GROUNDCOVER | |
|---|-------------------------|
|  | BOUGAINVILLEA GLABRA |
|  | BOUGAINVILLEA SPP |
|  | RUPELLIA CILIOSA |
|  | CLERODENDRUM INERME |
|  | CAESALPINIA PULCHERRIMA |
|  | TECOMARIA |
|  | CANNA INDICA |
|  | DURANTHA |
|  | SEASONAL FLOWER |
|  | PERENNIAL FLOWER |



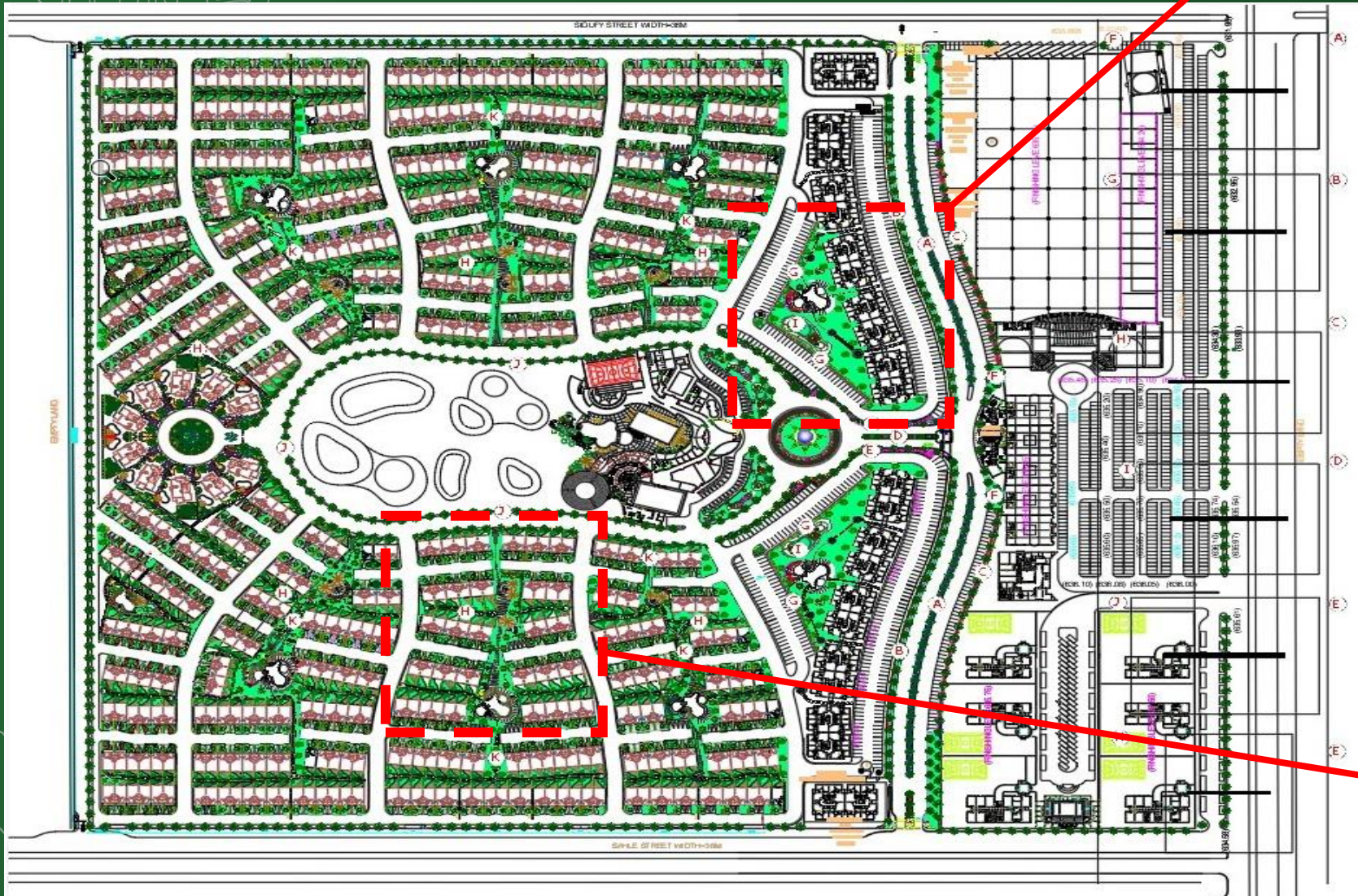
PROJECT PLANS

Private Farm, Diriyah, Riyadh



PROJECT PLANS

Al Nakhla Resort, Riyadh KSA



PROJECT PLANS

Rafiyah Private Villa, Riyadh KSA



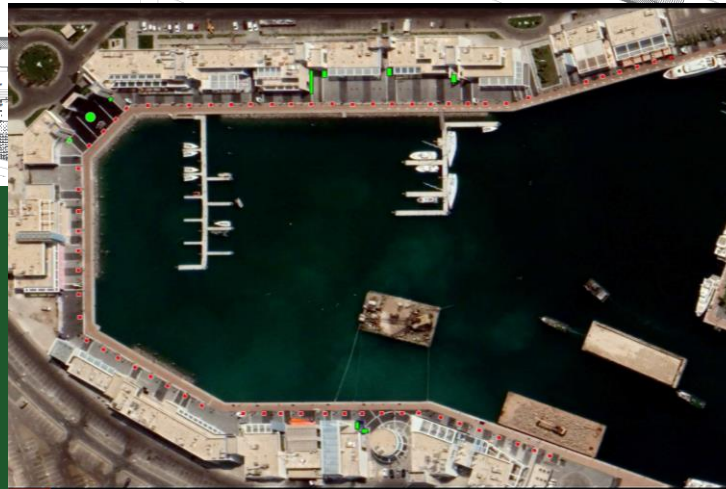
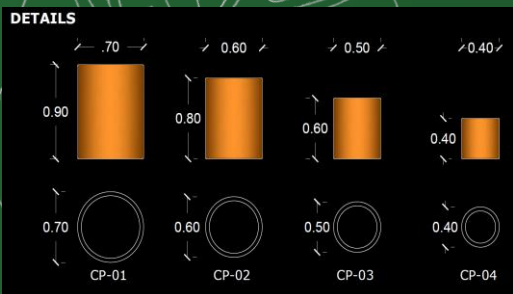
PROJECT PLANS

Sheik Salman Al Athel Private Resthouse ,Riyadh KSA



PROJECT PLANS

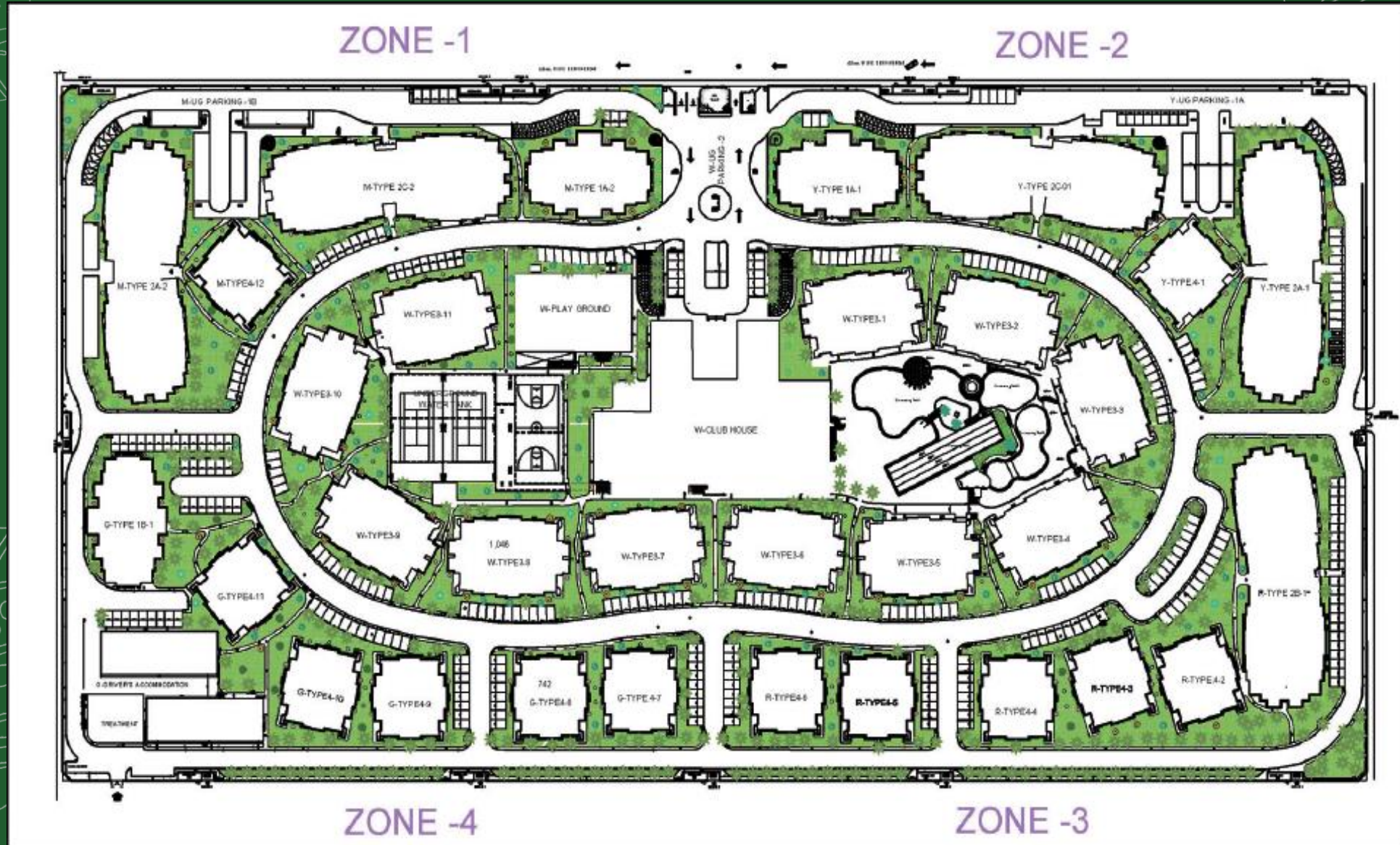
Marina Jeddah Yacht Club



CIRCULAR POT RANDOM SIZE AT MAIN ENTRANCE

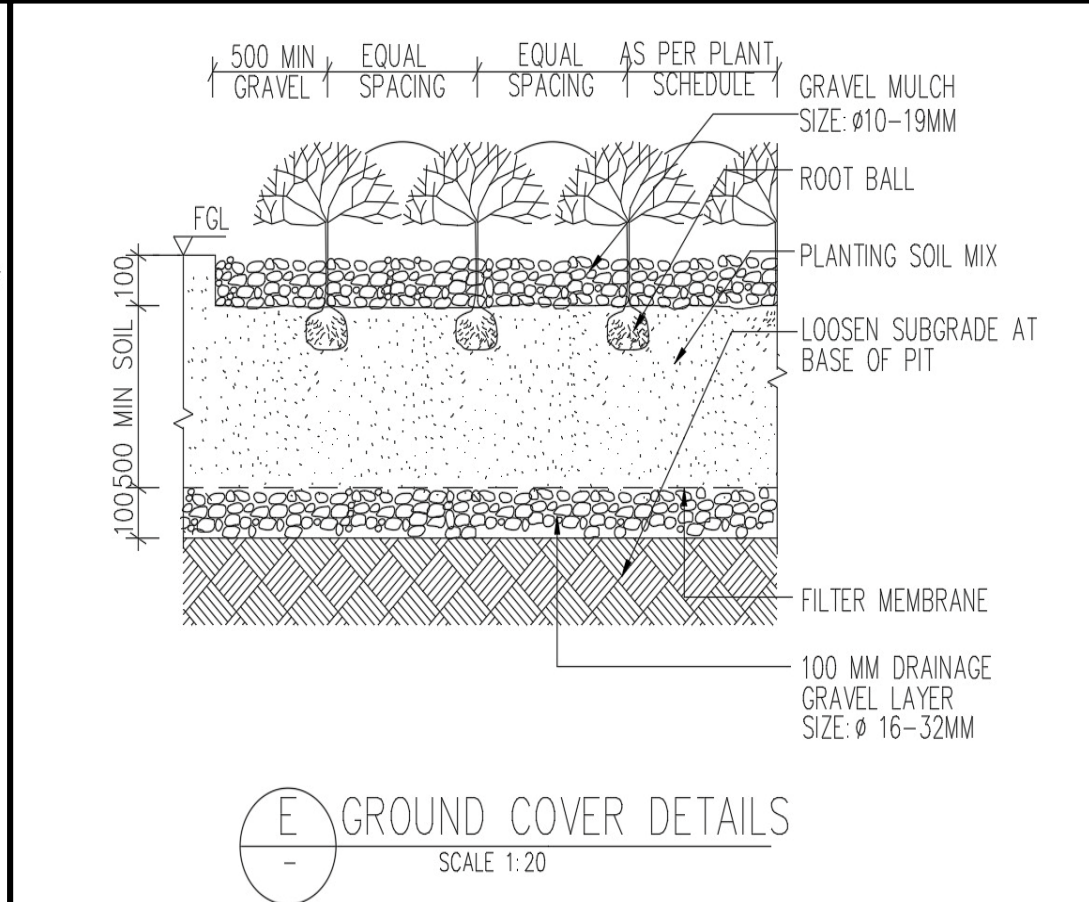
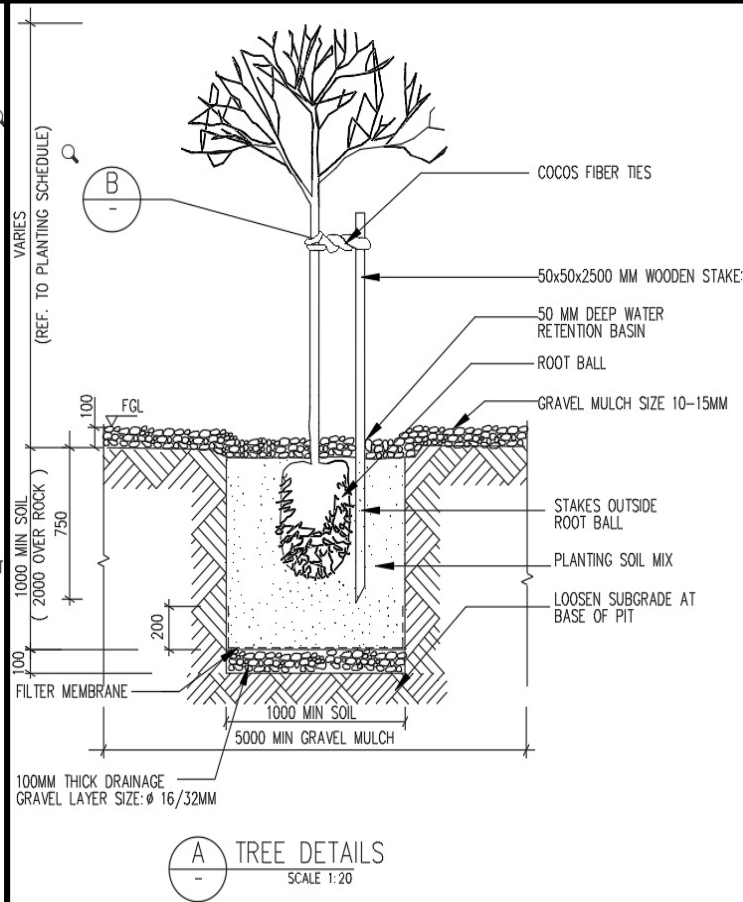
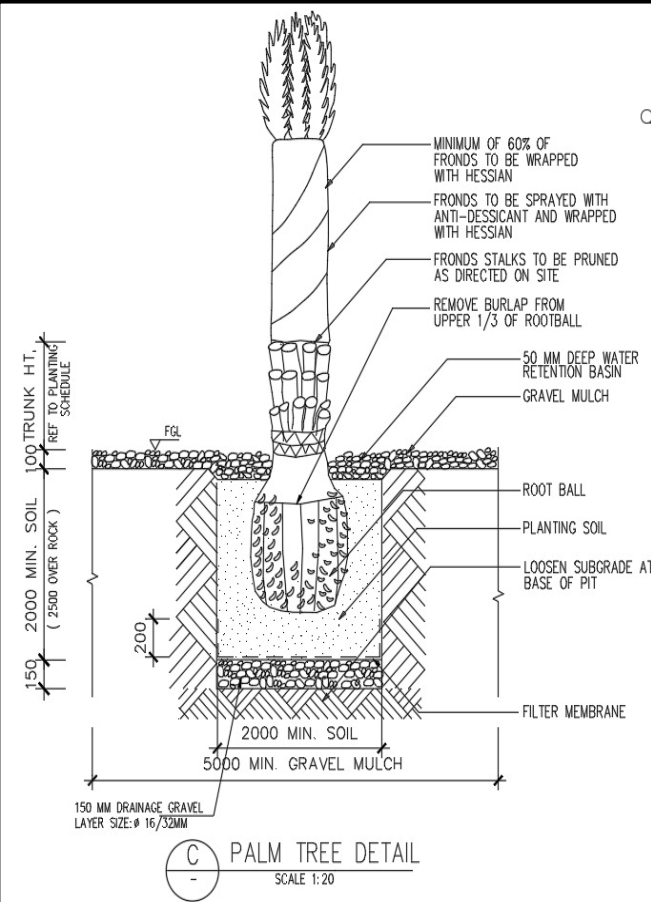
PROJECT PLANS

California Resort, Riyadh KSA



PROJECT PLANS

Plantation Shop Drawings





RENDER DESIGN

CONTRACTING

تصميم وتنفيذ

3D RENDER DESIGN

Riyadh Golf Club Dry Garden and Soft Garden
Riyadh, KSA



3D RENDER DESIGN

Riyadh Golf Club Dry Garden and Soft Garden
Riyadh, KSA



3D RENDER DESIGN

Riyadh Golf Club Dry Garden and Soft Garden
Riyadh, KSA



3D RENDER DESIGN

Holiday Inn Hotel
Riyadh, KSA



3D RENDER DESIGN

Private Farm

3D Design for Hardscape ,water feature and pool



3D RENDER DESIGN

Eng. Abdullah Fassam Private Villa
3D Design for Landscape Area



3D RENDER DESIGN

Saudi Investment Bank, Head Office
KSA

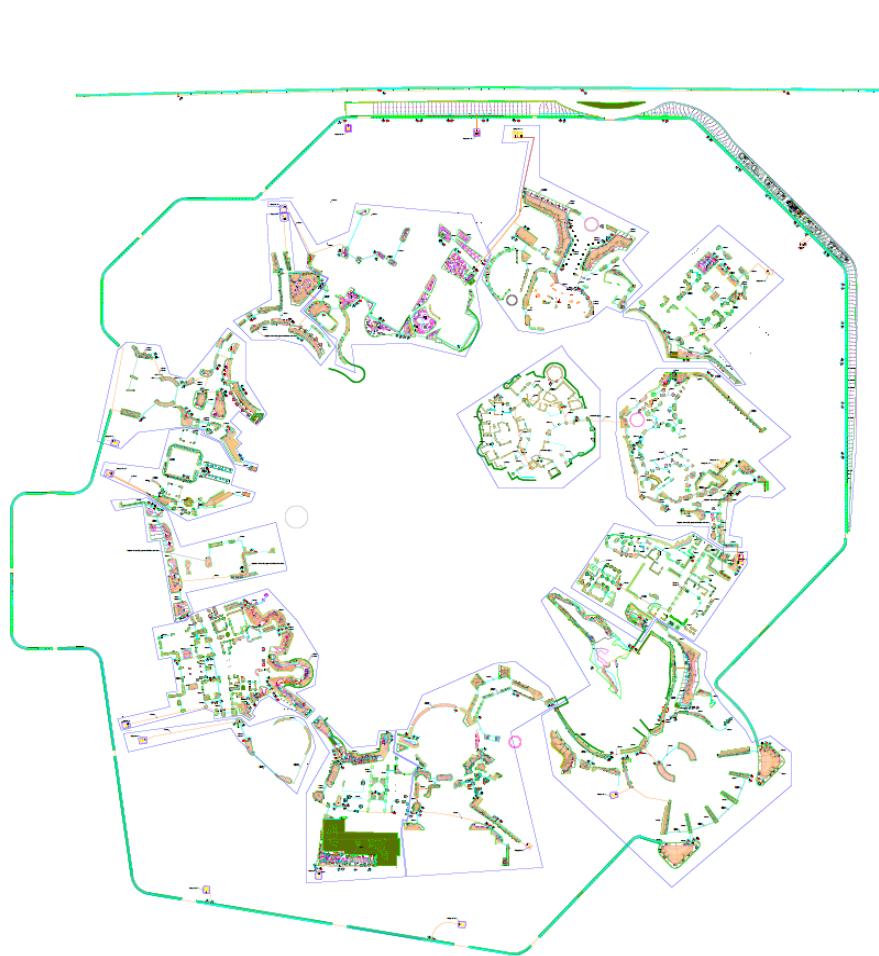


Irrigation System

- Our company provides high quality automatic irrigation system which harmonizes with nature of environment and distribute the water even and properly in economical way that is installed by its specialist engineers.

Irrigation Plans

Boulevard World
Riyadh , KSA 2023



LEGEND:

- 63mm Lateral, 63 mm, 10 Bar, 0/0
- 50mm Lateral, 50 mm, 10 Bar, 0/0
- 16mm Lateral, 16 mm, 3 Bar
- 12mm, 00
- Gate Valve, 2"
- Quick-Coupler Valve, 1"
- Quick-Coupler Valve, 10-12 VAN Nozzle (4.3) (2-3000 deg)
- Adjustable Bubble, 1-2 gpm
- Quick-Coupler, 0.10 gpm
- Water Tank, Capacity: 20,000 L
- Pump, 7.5 Hp (5.5 Kw)
- Flow: 70 GPM, 6 Bar
- GV Marking
- Discharge in GPM
- Valve size in inch

KEY PLAN

| NO. | DATE | REVISION | BY | CHKD |
|-----|------------|-------------------|----|------|
| 01 | 2023-01-01 | ISSUED WATER PLAN | | |
| 02 | 2023-01-01 | ISSUED WATER PLAN | | |
| 03 | 2023-01-01 | ISSUED WATER PLAN | | |
| 04 | 2023-01-01 | ISSUED WATER PLAN | | |
| 05 | 2023-01-01 | ISSUED WATER PLAN | | |
| 06 | 2023-01-01 | ISSUED WATER PLAN | | |
| 07 | 2023-01-01 | ISSUED WATER PLAN | | |
| 08 | 2023-01-01 | ISSUED WATER PLAN | | |
| 09 | 2023-01-01 | ISSUED WATER PLAN | | |
| 10 | 2023-01-01 | ISSUED WATER PLAN | | |

CLIENT:

CLIENT:

CLIENT:

CLIENT:

CLIENT:

CLIENT:

CLIENT:

CLIENT:

CLIENT:

CLIENT:

CLIENT:

CLIENT:

CLIENT:

CLIENT:

CLIENT:

CLIENT:

CLIENT:

CLIENT:

CLIENT:

CLIENT:

CLIENT:

CLIENT:

CLIENT:

CLIENT:

sela
Architecture Department
Other Al Jawahiri District Jeddah
23731, 2452, Jeddah, KSA

Boulevard World
Boulevard World MASTER PLAN_V08.7

DRAWING TITLE: IRRIGATION PLAN Rev 3

DESIGN BY: JSC

DESIGNED BY: JSC

APPROVED BY: FOR INHAUT USED ONLY

SCALE: 1:1000

DATE: Nov 21, 2023

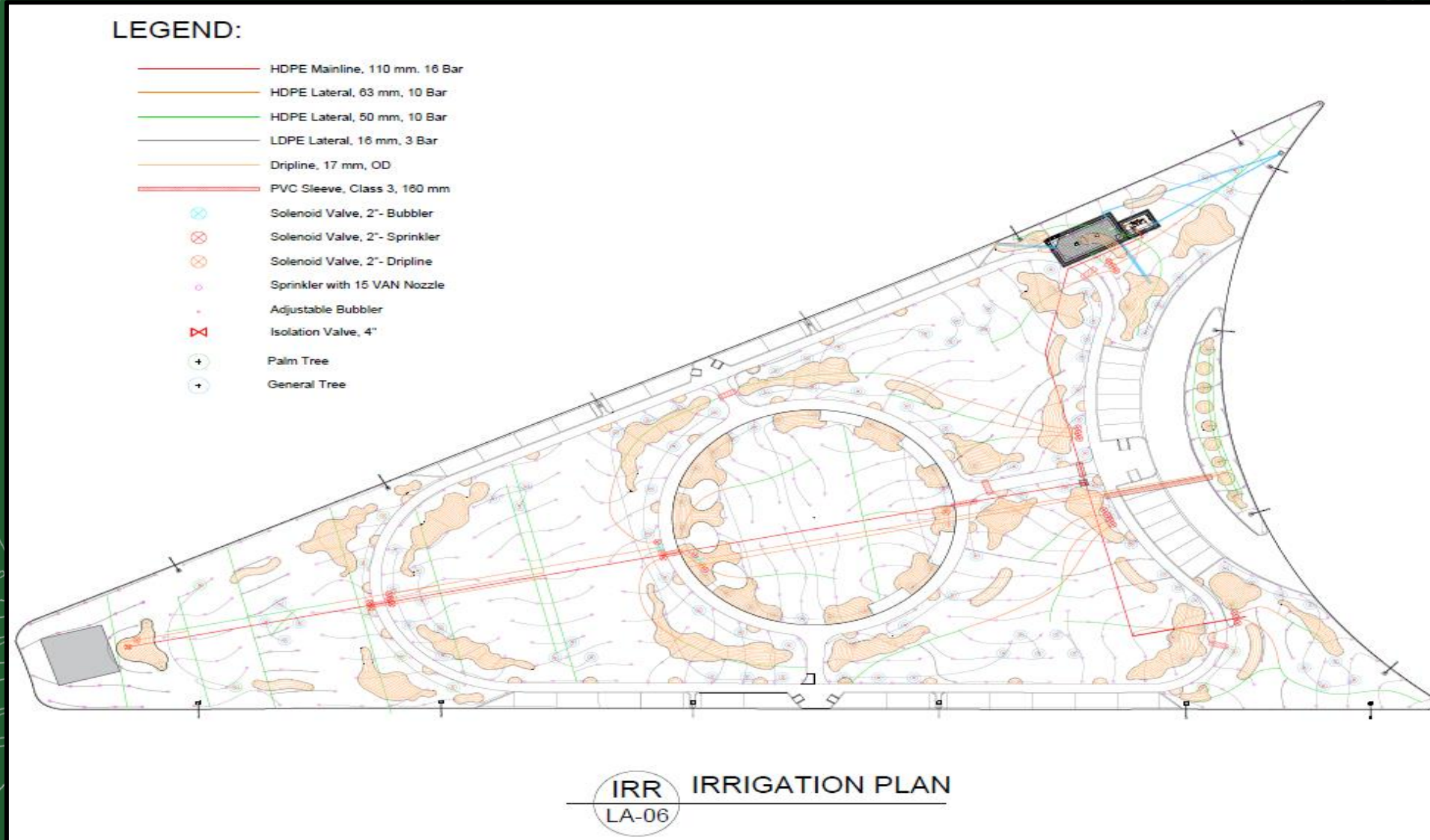
VERSION: Master Plan_V08.7

Client: Mr.



Irrigation Plans

Abha , Al Ghoniem, Roundabout
Amana, Aseer





CP & CPF In-line Automatic Sprinkler Valves

¾ in. or 1 in. irrigation valves with flow control option available

- Irrigation valve designed for in-line (below ground) installation with approved back flow prevention device (not included)
- ¾ in. or 1 in. female threaded inlet and outlet (use MPT threaded pipe adapters with Teflon tape)
- Top mounted, easy turn flow control option available to optimize flow to the zone for maximum efficiency
- 24 VAC, 50/60 Hz automatic operation or manual activation with bleed screw
- Buna-N diaphragm offers superior performance in harsh water environments
- Energy efficient, low power encapsulated solenoid with captured plunger for long lasting dependability
- Heavy duty construction with stainless steel screws

NOTES

- LEGEND:
- HDPE Main, 100mm, 16 Bar, UG
 - PVC Main, 100mm, 16 Bar, UG
 - HDPE Main, 150mm, 16 Bar, UG
 - PVC Main, 150mm, 16 Bar, UG
 - HDPE Main, 200mm, 16 Bar, UG
 - PVC Main, 200mm, 16 Bar, UG
 - HDPE Lateral, 100mm, 16 Bar, UG
 - PVC Lateral, 100mm, 16 Bar, UG
 - HDPE Lateral, 150mm, 16 Bar, UG
 - PVC Lateral, 150mm, 16 Bar, UG
 - HDPE Lateral, 200mm, 16 Bar, UG
 - PVC Lateral, 200mm, 16 Bar, UG
 - HDPE Lateral, 250mm, 16 Bar, UG
 - PVC Lateral, 250mm, 16 Bar, UG
 - HDPE Lateral, 300mm, 16 Bar, UG
 - PVC Lateral, 300mm, 16 Bar, UG
 - HDPE Lateral, 350mm, 16 Bar, UG
 - PVC Lateral, 350mm, 16 Bar, UG
 - HDPE Lateral, 400mm, 16 Bar, UG
 - PVC Lateral, 400mm, 16 Bar, UG
 - HDPE Lateral, 450mm, 16 Bar, UG
 - PVC Lateral, 450mm, 16 Bar, UG
 - HDPE Lateral, 500mm, 16 Bar, UG
 - PVC Lateral, 500mm, 16 Bar, UG
 - HDPE Lateral, 550mm, 16 Bar, UG
 - PVC Lateral, 550mm, 16 Bar, UG
 - HDPE Lateral, 600mm, 16 Bar, UG
 - PVC Lateral, 600mm, 16 Bar, UG
 - HDPE Lateral, 650mm, 16 Bar, UG
 - PVC Lateral, 650mm, 16 Bar, UG
 - HDPE Lateral, 700mm, 16 Bar, UG
 - PVC Lateral, 700mm, 16 Bar, UG
 - HDPE Lateral, 750mm, 16 Bar, UG
 - PVC Lateral, 750mm, 16 Bar, UG
 - HDPE Lateral, 800mm, 16 Bar, UG
 - PVC Lateral, 800mm, 16 Bar, UG
 - HDPE Lateral, 850mm, 16 Bar, UG
 - PVC Lateral, 850mm, 16 Bar, UG
 - HDPE Lateral, 900mm, 16 Bar, UG
 - PVC Lateral, 900mm, 16 Bar, UG
 - HDPE Lateral, 950mm, 16 Bar, UG
 - PVC Lateral, 950mm, 16 Bar, UG
 - HDPE Lateral, 1000mm, 16 Bar, UG
 - PVC Lateral, 1000mm, 16 Bar, UG
 - HDPE Lateral, 1050mm, 16 Bar, UG
 - PVC Lateral, 1050mm, 16 Bar, UG
 - HDPE Lateral, 1100mm, 16 Bar, UG
 - PVC Lateral, 1100mm, 16 Bar, UG
 - HDPE Lateral, 1150mm, 16 Bar, UG
 - PVC Lateral, 1150mm, 16 Bar, UG
 - HDPE Lateral, 1200mm, 16 Bar, UG
 - PVC Lateral, 1200mm, 16 Bar, UG
 - HDPE Lateral, 1250mm, 16 Bar, UG
 - PVC Lateral, 1250mm, 16 Bar, UG
 - HDPE Lateral, 1300mm, 16 Bar, UG
 - PVC Lateral, 1300mm, 16 Bar, UG
 - HDPE Lateral, 1350mm, 16 Bar, UG
 - PVC Lateral, 1350mm, 16 Bar, UG
 - HDPE Lateral, 1400mm, 16 Bar, UG
 - PVC Lateral, 1400mm, 16 Bar, UG
 - HDPE Lateral, 1450mm, 16 Bar, UG
 - PVC Lateral, 1450mm, 16 Bar, UG
 - HDPE Lateral, 1500mm, 16 Bar, UG
 - PVC Lateral, 1500mm, 16 Bar, UG
 - HDPE Lateral, 1550mm, 16 Bar, UG
 - PVC Lateral, 1550mm, 16 Bar, UG
 - HDPE Lateral, 1600mm, 16 Bar, UG
 - PVC Lateral, 1600mm, 16 Bar, UG
 - HDPE Lateral, 1650mm, 16 Bar, UG
 - PVC Lateral, 1650mm, 16 Bar, UG
 - HDPE Lateral, 1700mm, 16 Bar, UG
 - PVC Lateral, 1700mm, 16 Bar, UG
 - HDPE Lateral, 1750mm, 16 Bar, UG
 - PVC Lateral, 1750mm, 16 Bar, UG
 - HDPE Lateral, 1800mm, 16 Bar, UG
 - PVC Lateral, 1800mm, 16 Bar, UG
 - HDPE Lateral, 1850mm, 16 Bar, UG
 - PVC Lateral, 1850mm, 16 Bar, UG
 - HDPE Lateral, 1900mm, 16 Bar, UG
 - PVC Lateral, 1900mm, 16 Bar, UG
 - HDPE Lateral, 1950mm, 16 Bar, UG
 - PVC Lateral, 1950mm, 16 Bar, UG
 - HDPE Lateral, 2000mm, 16 Bar, UG
 - PVC Lateral, 2000mm, 16 Bar, UG
 - HDPE Lateral, 2050mm, 16 Bar, UG
 - PVC Lateral, 2050mm, 16 Bar, UG
 - HDPE Lateral, 2100mm, 16 Bar, UG
 - PVC Lateral, 2100mm, 16 Bar, UG
 - HDPE Lateral, 2150mm, 16 Bar, UG
 - PVC Lateral, 2150mm, 16 Bar, UG
 - HDPE Lateral, 2200mm, 16 Bar, UG
 - PVC Lateral, 2200mm, 16 Bar, UG
 - HDPE Lateral, 2250mm, 16 Bar, UG
 - PVC Lateral, 2250mm, 16 Bar, UG
 - HDPE Lateral, 2300mm, 16 Bar, UG
 - PVC Lateral, 2300mm, 16 Bar, UG
 - HDPE Lateral, 2350mm, 16 Bar, UG
 - PVC Lateral, 2350mm, 16 Bar, UG
 - HDPE Lateral, 2400mm, 16 Bar, UG
 - PVC Lateral, 2400mm, 16 Bar, UG
 - HDPE Lateral, 2450mm, 16 Bar, UG
 - PVC Lateral, 2450mm, 16 Bar, UG
 - HDPE Lateral, 2500mm, 16 Bar, UG
 - PVC Lateral, 2500mm, 16 Bar, UG
 - HDPE Lateral, 2550mm, 16 Bar, UG
 - PVC Lateral, 2550mm, 16 Bar, UG
 - HDPE Lateral, 2600mm, 16 Bar, UG
 - PVC Lateral, 2600mm, 16 Bar, UG
 - HDPE Lateral, 2650mm, 16 Bar, UG
 - PVC Lateral, 2650mm, 16 Bar, UG
 - HDPE Lateral, 2700mm, 16 Bar, UG
 - PVC Lateral, 2700mm, 16 Bar, UG
 - HDPE Lateral, 2750mm, 16 Bar, UG
 - PVC Lateral, 2750mm, 16 Bar, UG
 - HDPE Lateral, 2800mm, 16 Bar, UG
 - PVC Lateral, 2800mm, 16 Bar, UG
 - HDPE Lateral, 2850mm, 16 Bar, UG
 - PVC Lateral, 2850mm, 16 Bar, UG
 - HDPE Lateral, 2900mm, 16 Bar, UG
 - PVC Lateral, 2900mm, 16 Bar, UG
 - HDPE Lateral, 2950mm, 16 Bar, UG
 - PVC Lateral, 2950mm, 16 Bar, UG
 - HDPE Lateral, 3000mm, 16 Bar, UG
 - PVC Lateral, 3000mm, 16 Bar, UG
 - HDPE Lateral, 3050mm, 16 Bar, UG
 - PVC Lateral, 3050mm, 16 Bar, UG
 - HDPE Lateral, 3100mm, 16 Bar, UG
 - PVC Lateral, 3100mm, 16 Bar, UG
 - HDPE Lateral, 3150mm, 16 Bar, UG
 - PVC Lateral, 3150mm, 16 Bar, UG
 - HDPE Lateral, 3200mm, 16 Bar, UG
 - PVC Lateral, 3200mm, 16 Bar, UG
 - HDPE Lateral, 3250mm, 16 Bar, UG
 - PVC Lateral, 3250mm, 16 Bar, UG
 - HDPE Lateral, 3300mm, 16 Bar, UG
 - PVC Lateral, 3300mm, 16 Bar, UG
 - HDPE Lateral, 3350mm, 16 Bar, UG
 - PVC Lateral, 3350mm, 16 Bar, UG
 - HDPE Lateral, 3400mm, 16 Bar, UG
 - PVC Lateral, 3400mm, 16 Bar, UG
 - HDPE Lateral, 3450mm, 16 Bar, UG
 - PVC Lateral, 3450mm, 16 Bar, UG
 - HDPE Lateral, 3500mm, 16 Bar, UG
 - PVC Lateral, 3500mm, 16 Bar, UG
 - HDPE Lateral, 3550mm, 16 Bar, UG
 - PVC Lateral, 3550mm, 16 Bar, UG
 - HDPE Lateral, 3600mm, 16 Bar, UG
 - PVC Lateral, 3600mm, 16 Bar, UG
 - HDPE Lateral, 3650mm, 16 Bar, UG
 - PVC Lateral, 3650mm, 16 Bar, UG
 - HDPE Lateral, 3700mm, 16 Bar, UG
 - PVC Lateral, 3700mm, 16 Bar, UG
 - HDPE Lateral, 3750mm, 16 Bar, UG
 - PVC Lateral, 3750mm, 16 Bar, UG
 - HDPE Lateral, 3800mm, 16 Bar, UG
 - PVC Lateral, 3800mm, 16 Bar, UG
 - HDPE Lateral, 3850mm, 16 Bar, UG
 - PVC Lateral, 3850mm, 16 Bar, UG
 - HDPE Lateral, 3900mm, 16 Bar, UG
 - PVC Lateral, 3900mm, 16 Bar, UG
 - HDPE Lateral, 3950mm, 16 Bar, UG
 - PVC Lateral, 3950mm, 16 Bar, UG
 - HDPE Lateral, 4000mm, 16 Bar, UG
 - PVC Lateral, 4000mm, 16 Bar, UG
 - HDPE Lateral, 4050mm, 16 Bar, UG
 - PVC Lateral, 4050mm, 16 Bar, UG
 - HDPE Lateral, 4100mm, 16 Bar, UG
 - PVC Lateral, 4100mm, 16 Bar, UG
 - HDPE Lateral, 4150mm, 16 Bar, UG
 - PVC Lateral, 4150mm, 16 Bar, UG
 - HDPE Lateral, 4200mm, 16 Bar, UG
 - PVC Lateral, 4200mm, 16 Bar, UG
 - HDPE Lateral, 4250mm, 16 Bar, UG
 - PVC Lateral, 4250mm, 16 Bar, UG
 - HDPE Lateral, 4300mm, 16 Bar, UG
 - PVC Lateral, 4300mm, 16 Bar, UG
 - HDPE Lateral, 4350mm, 16 Bar, UG
 - PVC Lateral, 4350mm, 16 Bar, UG
 - HDPE Lateral, 4400mm, 16 Bar, UG
 - PVC Lateral, 4400mm, 16 Bar, UG
 - HDPE Lateral, 4450mm, 16 Bar, UG
 - PVC Lateral, 4450mm, 16 Bar, UG
 - HDPE Lateral, 4500mm, 16 Bar, UG
 - PVC Lateral, 4500mm, 16 Bar, UG
 - HDPE Lateral, 4550mm, 16 Bar, UG
 - PVC Lateral, 4550mm, 16 Bar, UG
 - HDPE Lateral, 4600mm, 16 Bar, UG
 - PVC Lateral, 4600mm, 16 Bar, UG
 - HDPE Lateral, 4650mm, 16 Bar, UG
 - PVC Lateral, 4650mm, 16 Bar, UG
 - HDPE Lateral, 4700mm, 16 Bar, UG
 - PVC Lateral, 4700mm, 16 Bar, UG
 - HDPE Lateral, 4750mm, 16 Bar, UG
 - PVC Lateral, 4750mm, 16 Bar, UG
 - HDPE Lateral, 4800mm, 16 Bar, UG
 - PVC Lateral, 4800mm, 16 Bar, UG
 - HDPE Lateral, 4850mm, 16 Bar, UG
 - PVC Lateral, 4850mm, 16 Bar, UG
 - HDPE Lateral, 4900mm, 16 Bar, UG
 - PVC Lateral, 4900mm, 16 Bar, UG
 - HDPE Lateral, 4950mm, 16 Bar, UG
 - PVC Lateral, 4950mm, 16 Bar, UG
 - HDPE Lateral, 5000mm, 16 Bar, UG
 - PVC Lateral, 5000mm, 16 Bar, UG
 - HDPE Lateral, 5050mm, 16 Bar, UG
 - PVC Lateral, 5050mm, 16 Bar, UG
 - HDPE Lateral, 5100mm, 16 Bar, UG
 - PVC Lateral, 5100mm, 16 Bar, UG
 - HDPE Lateral, 5150mm, 16 Bar, UG
 - PVC Lateral, 5150mm, 16 Bar, UG
 - HDPE Lateral, 5200mm, 16 Bar, UG
 - PVC Lateral, 5200mm, 16 Bar, UG
 - HDPE Lateral, 5250mm, 16 Bar, UG
 - PVC Lateral, 5250mm, 16 Bar, UG
 - HDPE Lateral, 5300mm, 16 Bar, UG
 - PVC Lateral, 5300mm, 16 Bar, UG
 - HDPE Lateral, 5350mm, 16 Bar, UG
 - PVC Lateral, 5350mm, 16 Bar, UG
 - HDPE Lateral, 5400mm, 16 Bar, UG
 - PVC Lateral, 5400mm, 16 Bar, UG
 - HDPE Lateral, 5450mm, 16 Bar, UG
 - PVC Lateral, 5450mm, 16 Bar, UG
 - HDPE Lateral, 5500mm, 16 Bar, UG
 - PVC Lateral, 5500mm, 16 Bar, UG
 - HDPE Lateral, 5550mm, 16 Bar, UG
 - PVC Lateral, 5550mm, 16 Bar, UG
 - HDPE Lateral, 5600mm, 16 Bar, UG
 - PVC Lateral, 5600mm, 16 Bar, UG
 - HDPE Lateral, 5650mm, 16 Bar, UG
 - PVC Lateral, 5650mm, 16 Bar, UG
 - HDPE Lateral, 5700mm, 16 Bar, UG
 - PVC Lateral, 5700mm, 16 Bar, UG
 - HDPE Lateral, 5750mm, 16 Bar, UG
 - PVC Lateral, 5750mm, 16 Bar, UG
 - HDPE Lateral, 5800mm, 16 Bar, UG
 - PVC Lateral, 5800mm, 16 Bar, UG
 - HDPE Lateral, 5850mm, 16 Bar, UG
 - PVC Lateral, 5850mm, 16 Bar, UG
 - HDPE Lateral, 5900mm, 16 Bar, UG
 - PVC Lateral, 5900mm, 16 Bar, UG
 - HDPE Lateral, 5950mm, 16 Bar, UG
 - PVC Lateral, 5950mm, 16 Bar, UG
 - HDPE Lateral, 6000mm, 16 Bar, UG
 - PVC Lateral, 6000mm, 16 Bar, UG
 - HDPE Lateral, 6050mm, 16 Bar, UG
 - PVC Lateral, 6050mm, 16 Bar, UG
 - HDPE Lateral, 6100mm, 16 Bar, UG
 - PVC Lateral, 6100mm, 16 Bar, UG
 - HDPE Lateral, 6150mm, 16 Bar, UG
 - PVC Lateral, 6150mm, 16 Bar, UG
 - HDPE Lateral, 6200mm, 16 Bar, UG
 - PVC Lateral, 6200mm, 16 Bar, UG
 - HDPE Lateral, 6250mm, 16 Bar, UG
 - PVC Lateral, 6250mm, 16 Bar, UG
 - HDPE Lateral, 6300mm, 16 Bar, UG
 - PVC Lateral, 6300mm, 16 Bar, UG
 - HDPE Lateral, 6350mm, 16 Bar, UG
 - PVC Lateral, 6350mm, 16 Bar, UG
 - HDPE Lateral, 6400mm, 16 Bar, UG
 - PVC Lateral, 6400mm, 16 Bar, UG
 - HDPE Lateral, 6450mm, 16 Bar, UG
 - PVC Lateral, 6450mm, 16 Bar, UG
 - HDPE Lateral, 6500mm, 16 Bar, UG
 - PVC Lateral, 6500mm, 16 Bar, UG
 - HDPE Lateral, 6550mm, 16 Bar, UG
 - PVC Lateral, 6550mm, 16 Bar, UG
 - HDPE Lateral, 6600mm, 16 Bar, UG
 - PVC Lateral, 6600mm, 16 Bar, UG
 - HDPE Lateral, 6650mm, 16 Bar, UG
 - PVC Lateral, 6650mm, 16 Bar, UG
 - HDPE Lateral, 6700mm, 16 Bar, UG
 - PVC Lateral, 6700mm, 16 Bar, UG
 - HDPE Lateral, 6750mm, 16 Bar, UG
 - PVC Lateral, 6750mm, 16 Bar, UG
 - HDPE Lateral, 6800mm, 16 Bar, UG
 - PVC Lateral, 6800mm, 16 Bar, UG
 - HDPE Lateral, 6850mm, 16 Bar, UG
 - PVC Lateral, 6850mm, 16 Bar, UG
 - HDPE Lateral, 6900mm, 16 Bar, UG
 - PVC Lateral, 6900mm, 16 Bar, UG
 - HDPE Lateral, 6950mm, 16 Bar, UG
 - PVC Lateral, 6950mm, 16 Bar, UG
 - HDPE Lateral, 7000mm, 16 Bar, UG
 - PVC Lateral, 7000mm, 16 Bar, UG
 - HDPE Lateral, 7050mm, 16 Bar, UG
 - PVC Lateral, 7050mm, 16 Bar, UG
 - HDPE Lateral, 7100mm, 16 Bar, UG
 - PVC Lateral, 7100mm, 16 Bar, UG
 - HDPE Lateral, 7150mm, 16 Bar, UG
 - PVC Lateral, 7150mm, 16 Bar, UG
 - HDPE Lateral, 7200mm, 16 Bar, UG
 - PVC Lateral, 7200mm, 16 Bar, UG
 - HDPE Lateral, 7250mm, 16 Bar, UG
 - PVC Lateral, 7250mm, 16 Bar, UG
 - HDPE Lateral, 7300mm, 16 Bar, UG
 - PVC Lateral, 7300mm, 16 Bar, UG
 - HDPE Lateral, 7350mm, 16 Bar, UG
 - PVC Lateral, 7350mm, 16 Bar, UG
 - HDPE Lateral, 7400mm, 16 Bar, UG
 - PVC Lateral, 7400mm, 16 Bar, UG
 - HDPE Lateral, 7450mm, 16 Bar, UG
 - PVC Lateral, 7450mm, 16 Bar, UG
 - HDPE Lateral, 7500mm, 16 Bar, UG
 - PVC Lateral, 7500mm, 16 Bar, UG
 - HDPE Lateral, 7550mm, 16 Bar, UG
 - PVC Lateral, 7550mm, 16 Bar, UG
 - HDPE Lateral, 7600mm, 16 Bar, UG
 - PVC Lateral, 7600mm, 16 Bar, UG
 - HDPE Lateral, 7650mm, 16 Bar, UG
 - PVC Lateral, 7650mm, 16 Bar, UG
 - HDPE Lateral, 7700mm, 16 Bar, UG
 - PVC Lateral, 7700mm, 16 Bar, UG
 - HDPE Lateral, 7750mm, 16 Bar, UG
 - PVC Lateral, 7750mm, 16 Bar, UG
 - HDPE Lateral, 7800mm, 16 Bar, UG
 - PVC Lateral, 7800mm, 16 Bar, UG
 - HDPE Lateral, 7850mm, 16 Bar, UG
 - PVC Lateral, 7850mm, 16 Bar, UG
 - HDPE Lateral, 7900mm, 16 Bar, UG
 - PVC Lateral, 7900mm, 16 Bar, UG
 - HDPE Lateral, 7950mm, 16 Bar, UG
 - PVC Lateral, 7950mm, 16 Bar, UG
 - HDPE Lateral, 8000mm, 16 Bar, UG
 - PVC Lateral, 8000mm, 16 Bar, UG
 - HDPE Lateral, 8050mm, 16 Bar, UG
 - PVC Lateral, 8050mm, 16 Bar, UG
 - HDPE Lateral, 8100mm, 16 Bar, UG
 - PVC Lateral, 8100mm, 16 Bar, UG
 - HDPE Lateral, 8150mm, 16 Bar, UG
 - PVC Lateral, 8150mm, 16 Bar, UG
 - HDPE Lateral, 8200mm, 16 Bar, UG
 - PVC Lateral, 8200mm, 16 Bar, UG
 - HDPE Lateral, 8250mm, 16 Bar, UG
 - PVC Lateral, 8250mm, 16 Bar, UG
 - HDPE Lateral, 8300mm, 16 Bar, UG
 - PVC Lateral, 8300mm, 16 Bar, UG
 - HDPE Lateral, 8350mm, 16 Bar, UG
 - PVC Lateral, 8350mm, 16 Bar, UG
 - HDPE Lateral, 8400mm, 16 Bar, UG
 - PVC Lateral, 8400mm, 16 Bar, UG
 - HDPE Lateral, 8450mm, 16 Bar, UG
 - PVC Lateral, 8450mm, 16 Bar, UG
 - HDPE Lateral, 8500mm, 16 Bar, UG
 - PVC Lateral, 8500mm, 16 Bar, UG
 - HDPE Lateral, 8550mm, 16 Bar, UG
 - PVC Lateral, 8550mm, 16 Bar, UG
 - HDPE Lateral, 8600mm, 16 Bar, UG
 - PVC Lateral, 8600mm, 16 Bar, UG
 - HDPE Lateral, 8650mm, 16 Bar, UG
 - PVC Lateral, 8650mm, 16 Bar, UG
 - HDPE Lateral, 8700mm, 16 Bar, UG
 - PVC Lateral, 8700mm, 16 Bar, UG
 - HDPE Lateral, 8750mm, 16 Bar, UG
 - PVC Lateral, 8750mm, 16 Bar, UG
 - HDPE Lateral, 8800mm, 16 Bar, UG
 - PVC Lateral, 8800mm, 16 Bar, UG
 - HDPE Lateral, 8850mm, 16 Bar, UG
 - PVC Lateral, 8850mm, 16 Bar, UG
 - HDPE Lateral, 8900mm, 16 Bar, UG
 - PVC Lateral, 8900mm, 16 Bar, UG
 - HDPE Lateral, 8950mm, 16 Bar, UG
 - PVC Lateral, 8950mm, 16 Bar, UG
 - HDPE Lateral, 9000mm, 16 Bar, UG
 - PVC Lateral, 9000mm, 16 Bar, UG
 - HDPE Lateral, 9050mm, 16 Bar, UG
 - PVC Lateral, 9050mm, 16 Bar, UG
 - HDPE Lateral, 9100mm, 16 Bar, UG
 - PVC Lateral, 9100mm, 16 Bar, UG
 - HDPE Lateral, 9150mm, 16 Bar, UG
 - PVC Lateral, 9150mm, 16 Bar, UG
 - HDPE Lateral, 9200mm, 16 Bar, UG
 - PVC Lateral, 9200mm, 16 Bar, UG
 - HDPE Lateral, 9250mm, 16 Bar, UG
 - PVC Lateral, 9250mm, 16 Bar, UG
 - HDPE Lateral, 9300mm, 16 Bar, UG
 - PVC Lateral, 9300mm, 16 Bar, UG
 - HDPE Lateral, 9350mm, 16 Bar, UG
 - PVC Lateral, 9350mm, 16 Bar, UG
 - HDPE Lateral, 9400mm, 16 Bar, UG
 - PVC Lateral, 9400mm, 16 Bar, UG
 - HDPE Lateral, 9450mm, 16 Bar, UG
 - PVC Lateral, 9450mm, 16 Bar, UG
 - HDPE Lateral, 9500mm, 16 Bar, UG
 - PVC Lateral, 9500mm, 16 Bar, UG
 - HDPE Lateral, 9550mm, 16 Bar, UG
 - PVC Lateral, 9550mm, 16 Bar, UG
 - HDPE Lateral, 9600mm, 16 Bar, UG
 - PVC Lateral, 9600mm, 16 Bar, UG
 - HDPE Lateral, 9650mm, 16 Bar, UG
 - PVC Lateral, 9650mm, 16 Bar, UG
 - HDPE Lateral, 9700mm, 16 Bar, UG
 - PVC Lateral, 9700mm, 16 Bar, UG
 - HDPE Lateral, 9750mm, 16 Bar, UG
 - PVC Lateral, 9750mm, 16 Bar, UG
 - HDPE Lateral, 9800mm, 16 Bar, UG
 - PVC Lateral, 9800mm, 16 Bar, UG
 - HDPE Lateral, 9850mm, 16 Bar, UG
 - PVC Lateral, 9850mm, 16 Bar, UG
 - HDPE Lateral, 9900mm, 16 Bar, UG
 - PVC Lateral, 9900mm, 16 Bar, UG
 - HDPE Lateral, 9950mm, 16 Bar, UG
 - PVC Lateral, 9950mm, 16 Bar, UG
 - HDPE Lateral, 10000mm, 16 Bar, UG
 - PVC Lateral, 10000mm, 16 Bar, UG

| PROJECT NO. | PROJECT NAME |
|-------------------------|------------------|
| PROJECT MEDICAL VILLAGE | |
| LOCATION | DATE |
| RIYADH - K.S.A | |
| REV | DESCRIPTION |
| 01 | As-Built Drawing |

| OWNER |
|-------|
| |

| PROJECT NAME |
|----------------|
| LAYSAN VALLEY |
| LOCATION |
| RIYADH - K.S.A |

| CONSULTANT |
|------------------------------------|
| SAUDIA ARCHITECTS |
| Eng. Abdulla M. Al-Mutairi |
| For the Client: Mr. Tariq Al-Fozan |

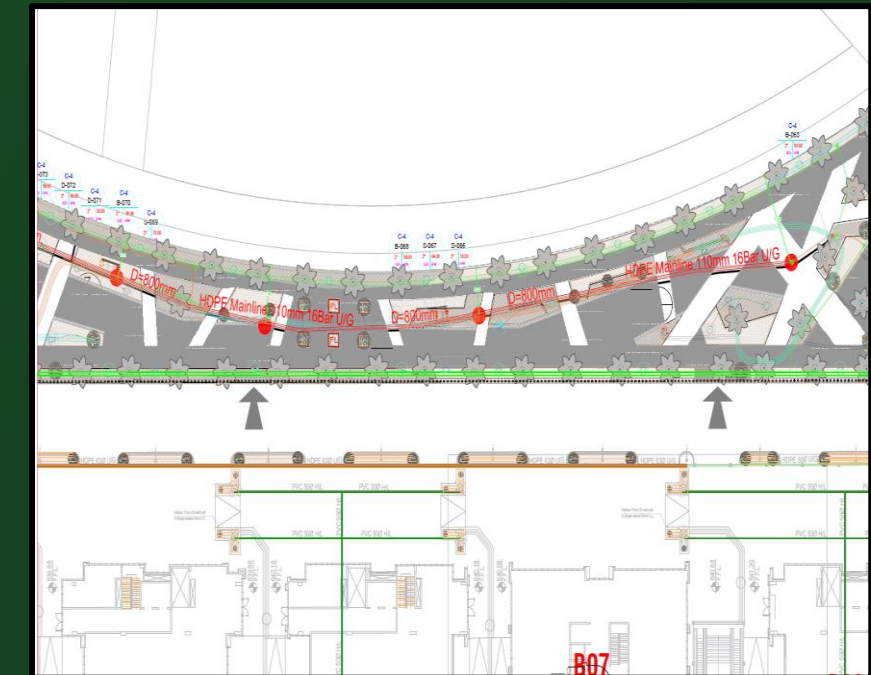
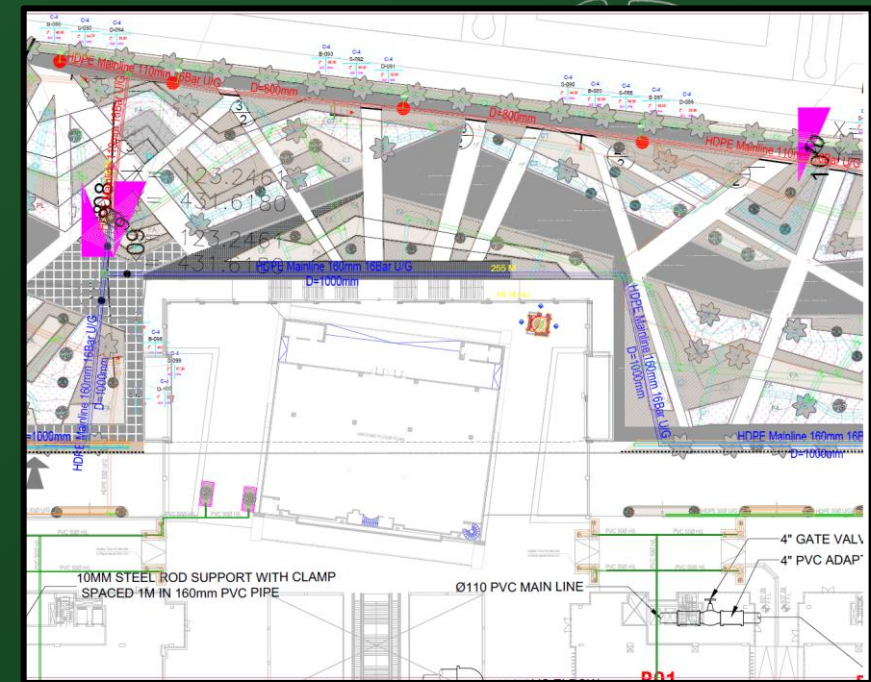
| CONTRACTOR |
|------------------|
| المقاولون العرب |
| Arab Contractors |

| LANDSCAPE CONTRACTOR |
|----------------------|
| NBT |
| نبت للمقاولات |

| KEY PLAN |
|----------|
| |

| DWG. TITLE |
|-----------------|
| IRRIGATION PLAN |
| As-Built |

| SCALE | DATE | DWG. NO. | REV. NO. |
|--------|------|-------------|----------|
| 1:1400 | A1 | HL-BR-AB-00 | 01/23 |



IRRIGATION MASTER AS-BUILT PLAN

Irrigation Plans

Via Riyadh
Riyadh , KSA

1



2

PROJECT: VIA RYADH
OWNER: **sela**
CONSULTANT: **نبت للمقاولات**
LANDSCAPE CONTRACTOR: **نبت للمقاولات**

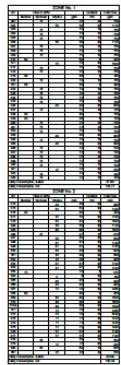
LEGEND:

- HDPE Main, 160x110 mm, 16 Bar
- HDPE Lateral, 80 mm, 10 Bar
- HDPE Lateral, 50 mm, 10 Bar
- HDPE Lateral, 32 mm, 10 Bar
- LDPE Lateral, 16 mm, 2 Bar
- Drip line, 17 mm, OD
- Submerged Valve, 2" - Submitter
- Submerged Valve, 2" - Sprinkler
- Submerged Valve, 2" - Drip line
- Quick Coupling Valve, 1"
- Sprinkler with 15' VMA Nozzle
- Adjustable Backflow for Pines
- Adjustable Backflow for Trees
- Orbit Dripper
- Controller Designation
- DV Identification
- Discharge in GPM
- Valve size in inch

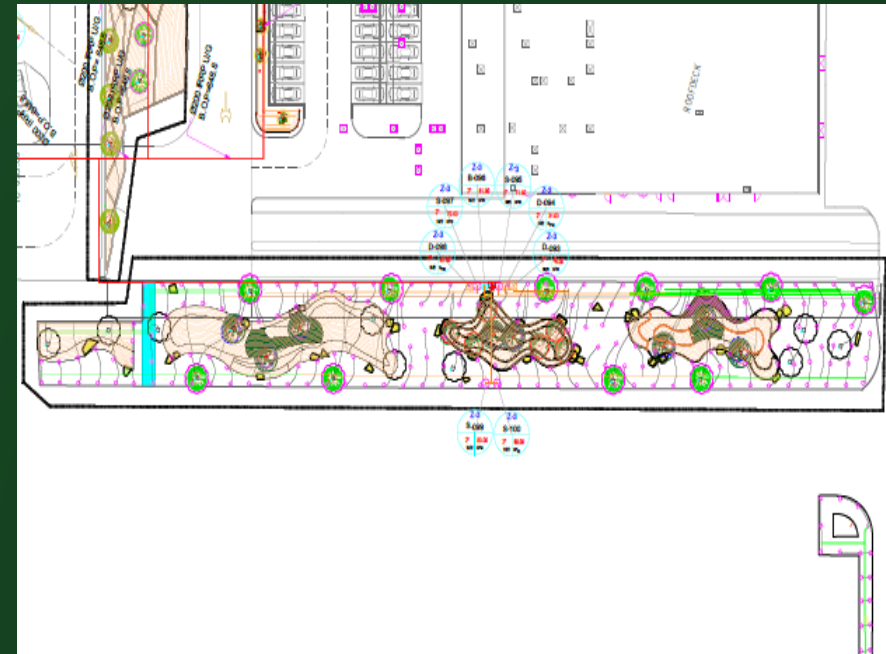
| NO. | DESCRIPTION | BY | DATE |
|-----|--------------|----|-------------|
| 1 | FOR APPROVAL | | 26 Feb 2023 |

REFERENCE :
LOCATION: VIA RYADH - HOTEL AREA
DRAWING TITLE: AS-BUILT IRRIGATION PLAN Zone 1, 2 & 3
DRAWING NUMBER: 26 Feb 2023
PREPARED BY: REVIEWED BY: APPROVED BY:

4

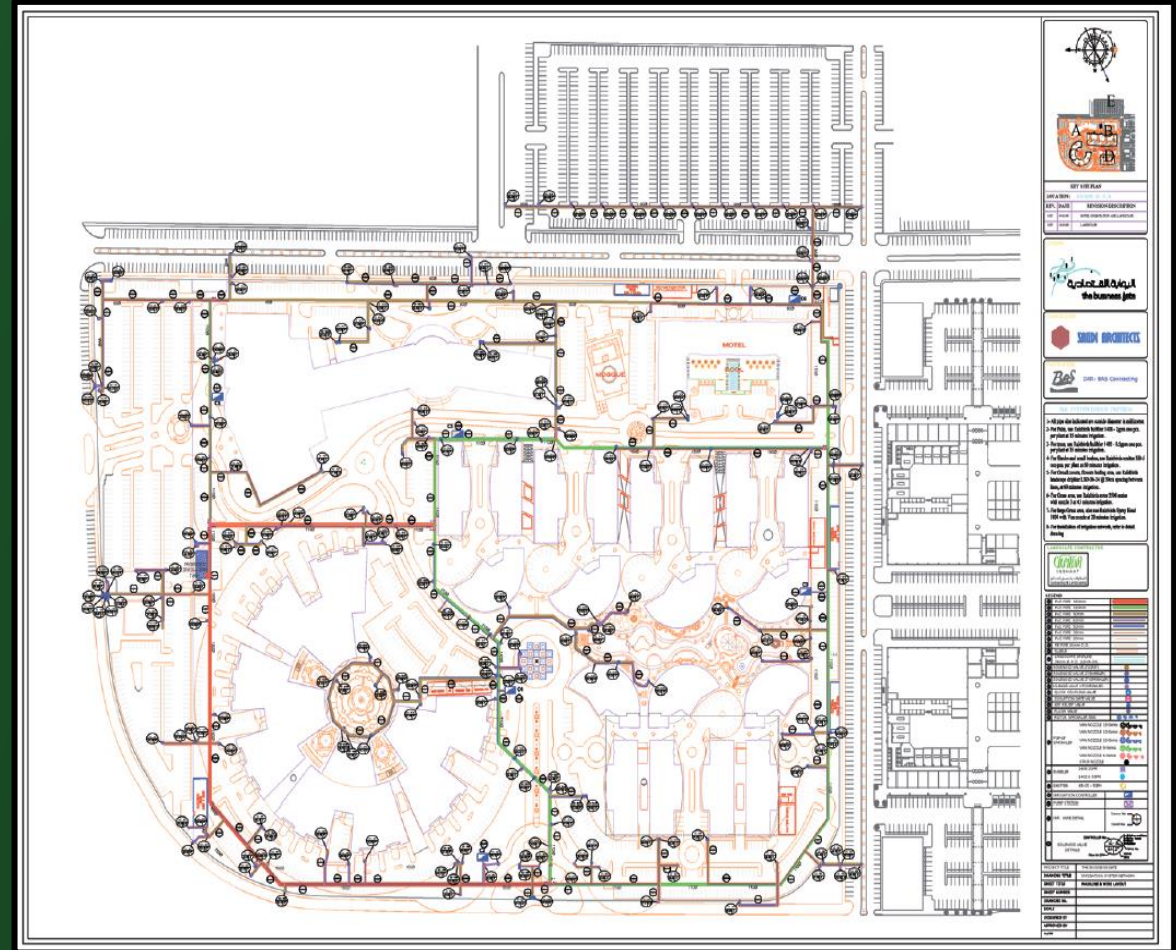
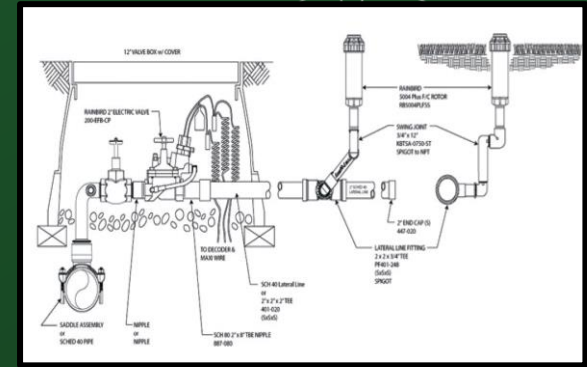
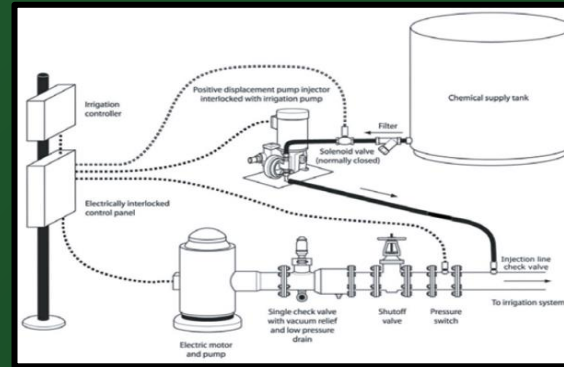
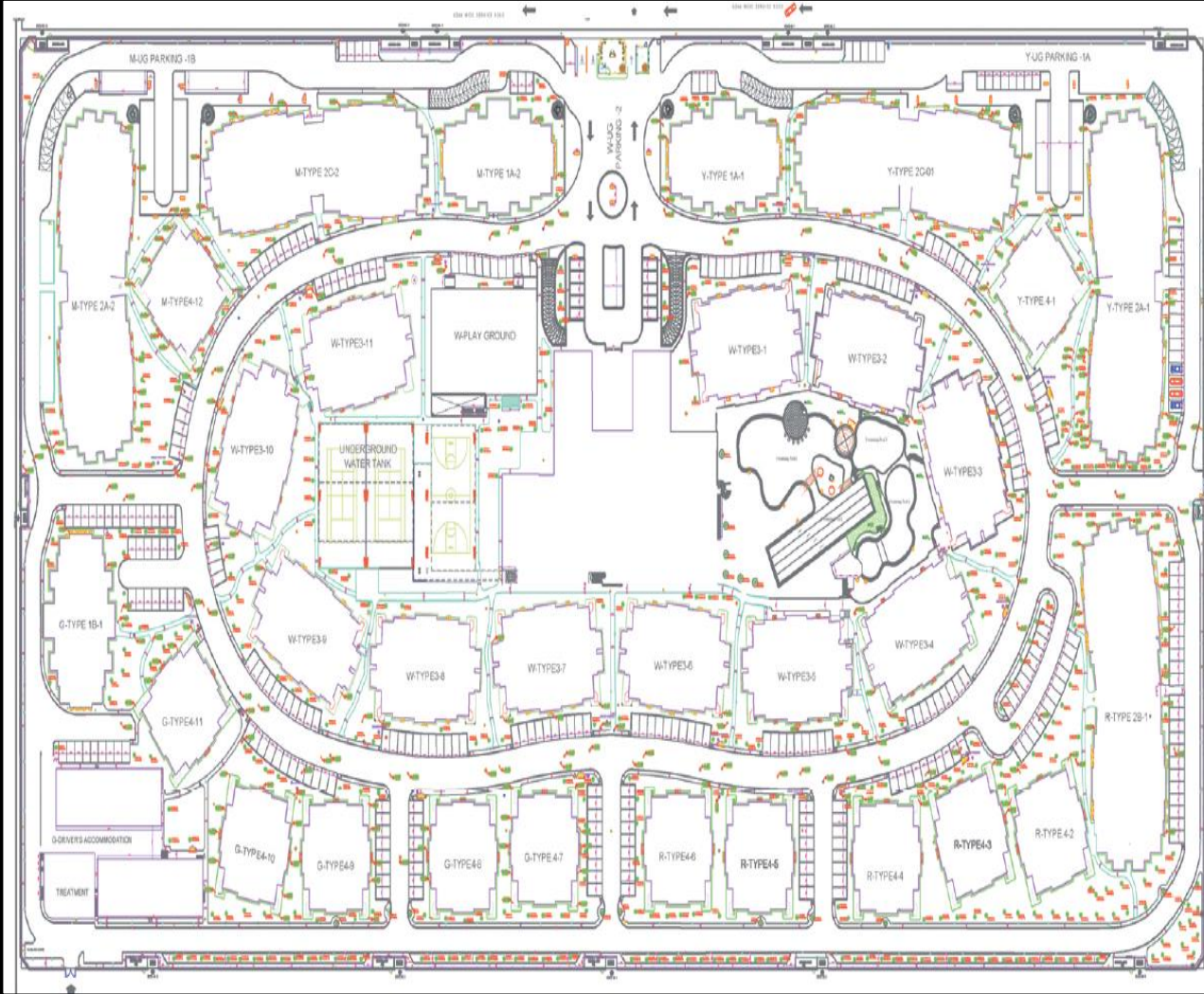


3



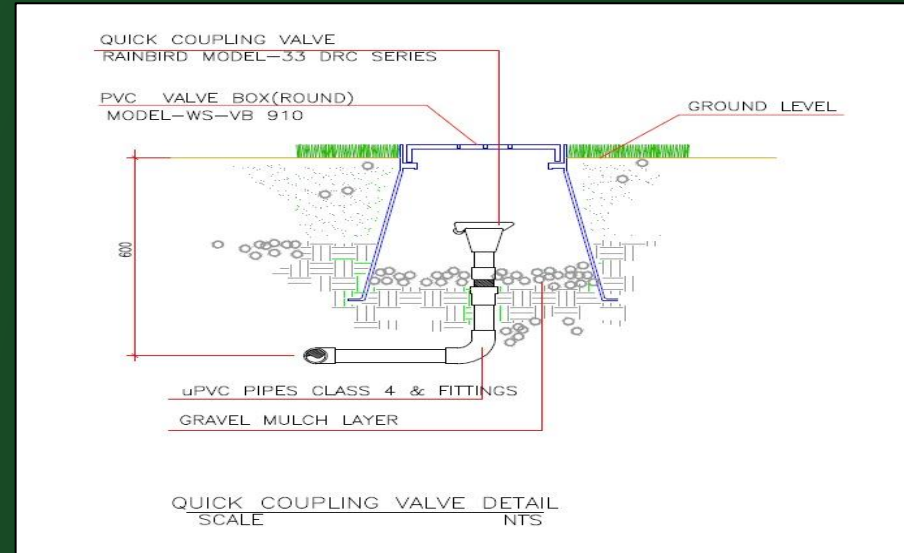
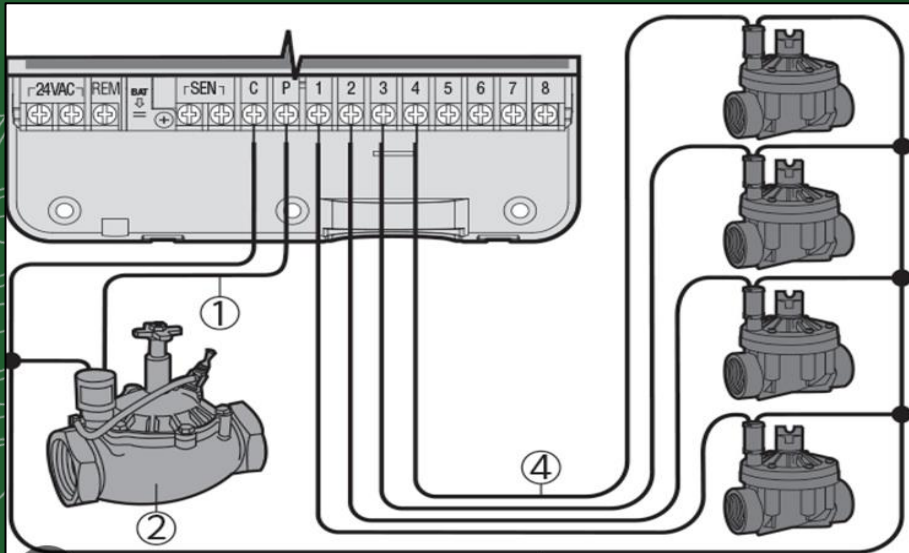
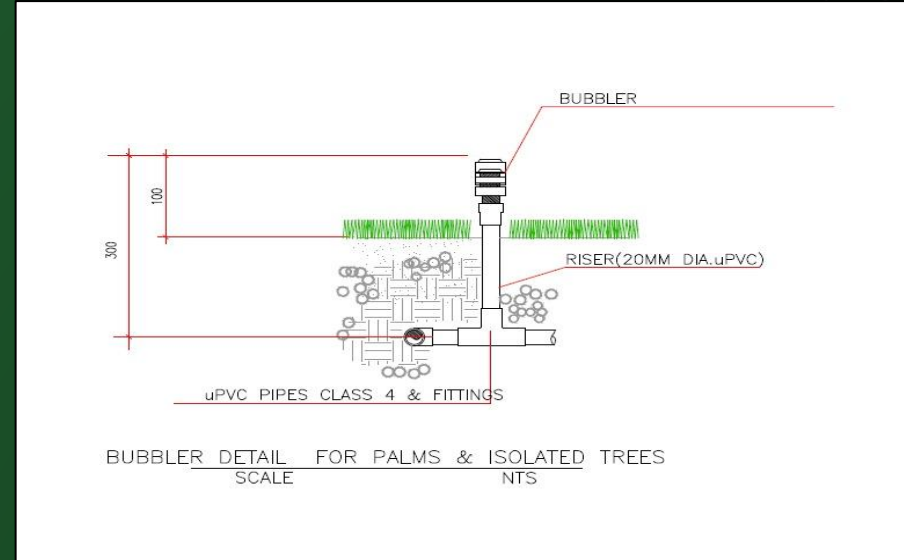
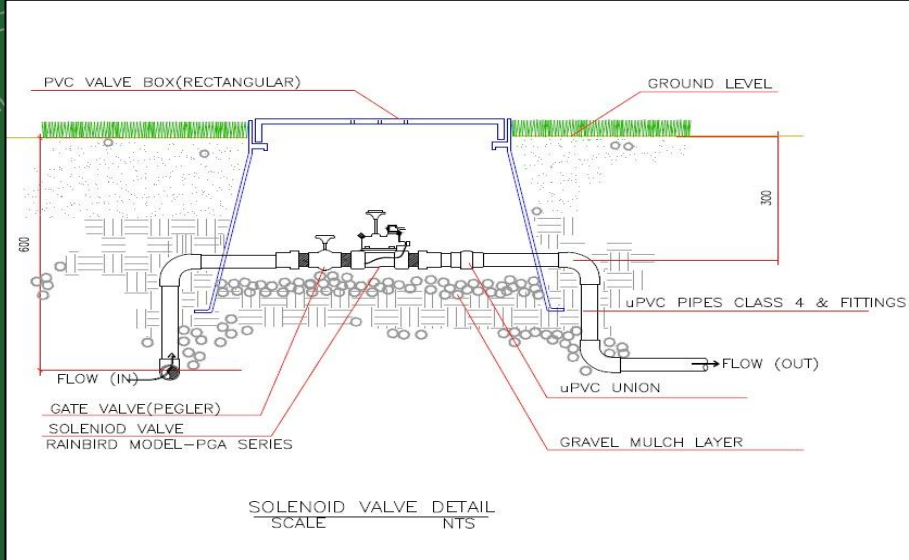
Irrigation Plans

California Resort, Exit 8
Riyadh , KSA



Irrigation Plans

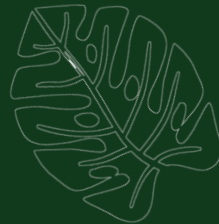

LANDSCAPE SHOP DRAWINGS





Installation of Landscaping

The company concentrates on the installation of gardens, rest houses, complexes, palaces and villas as well as park and football stadiums with design and professionalism with keeping in the mind the requirements of clients, taking in account the reduction of operating burdens in the future.





SITE PREPARATION & EXECUTION WORKS

CONTRACTING

مقاولات

Site Preparation & Execution Works

Location: Riyadh K.S.A



Site Preparation & Execution Works

ELECTRICAL WORKS



Site Preparation & Execution Works

ELECTRICAL WORKS



Site Preparation & Execution Works

IRRIGATION WORKS



Site Preparation & Execution Works

Location: Riyadh K.S.A



Site Preparation & Execution Works

Location: Riyadh K.S.A



Site Preparation & Execution Works

Location: Riyadh K.S.A



Site Preparation & Execution Works

Location: Riyadh K.S.A



Site Preparation & Execution Works

Location: Riyadh K.S.A



Site Preparation & Hardscape Works

Location: Riyadh, KSA



Site Preparation & Execution Works

Location: Riyadh K.S.A



Site Preparation & Execution Works

Location: Riyadh K.S.A



Site Preparation & Execution Works

Location: Riyadh K.S.A



Site Preparation & Hardscape Works in Laysen Valley

Location: Riyadh K.S.A





Site Preparation & Hardscape Works for Kaden

Location: Riyadh K.S.A



Location: Riyadh K.S.A



Site Preparation & Execution Works

Location: Riyadh K.S.A



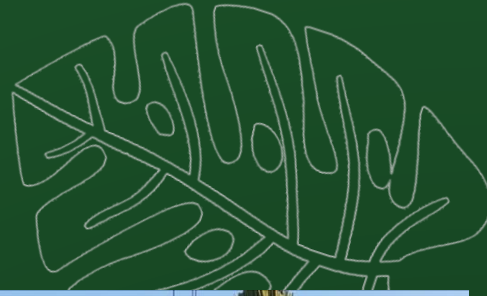
Site Preparation & Execution Works

Location: Riyadh K.S.A



Site Preparation & Execution Works

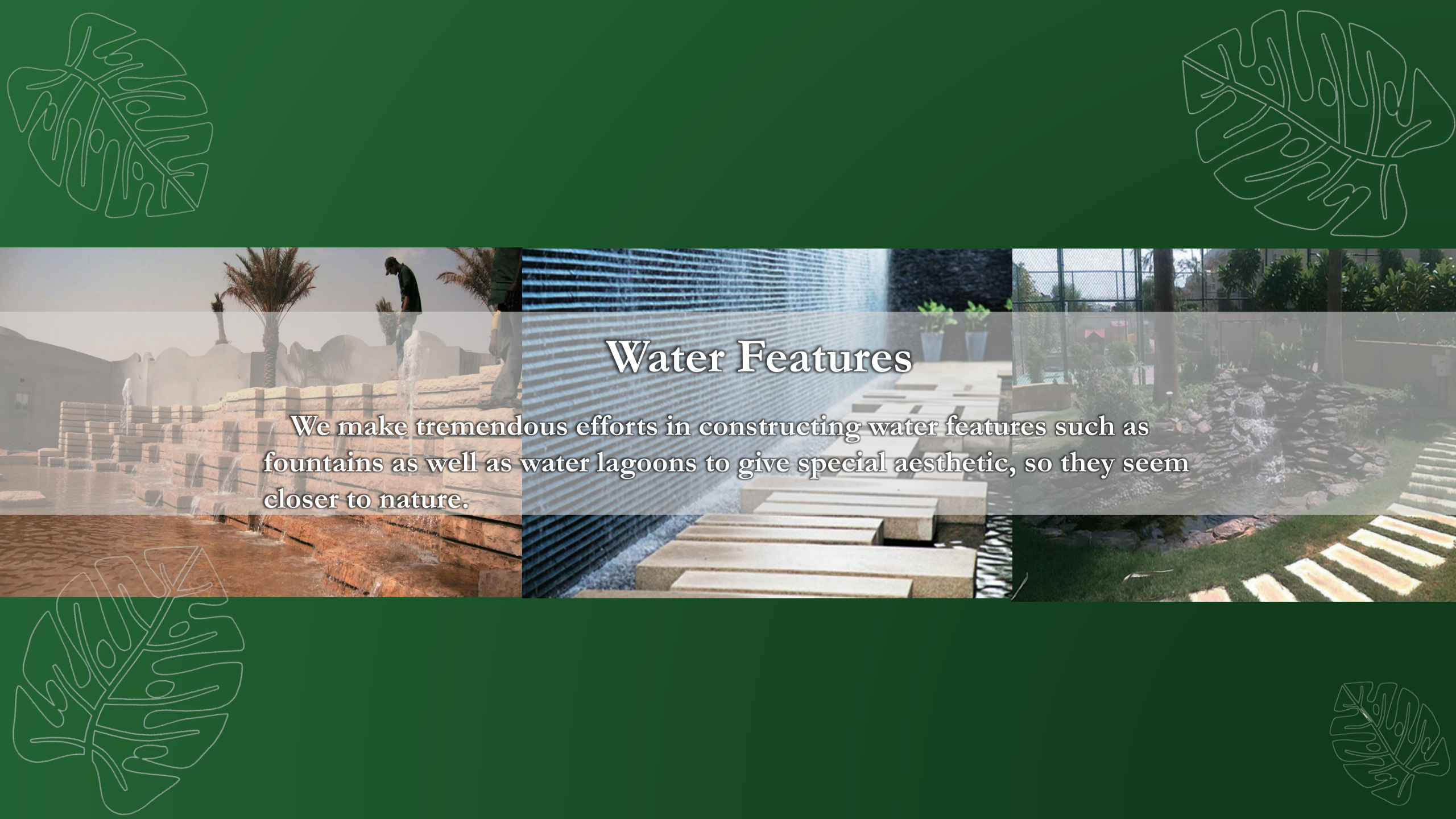
Location: Riyadh K.S.A



Site Preparation & Drainage System Works

Location: Riyadh K.S.A





Water Features

We make tremendous efforts in constructing water features such as fountains as well as water lagoons to give special aesthetic, so they seem closer to nature.

WATER FEATURES

Location: Riyadh K.S.A



WATER FEATURES



WATER FEATURES



WATER FEATURES



WATER FEATURES



WATER FEATURES





EXECUTED PROJECTS

CONTRACTING

تقانة البناء

Execution and Maintenance

Project: Marvela Projects

Location: Riyadh K.S.A





Execution and Maintenance

Project: Marvela Projects

Location: Riyadh K.S.A

Execution of Landscape, Irrigation , and Hardscape.

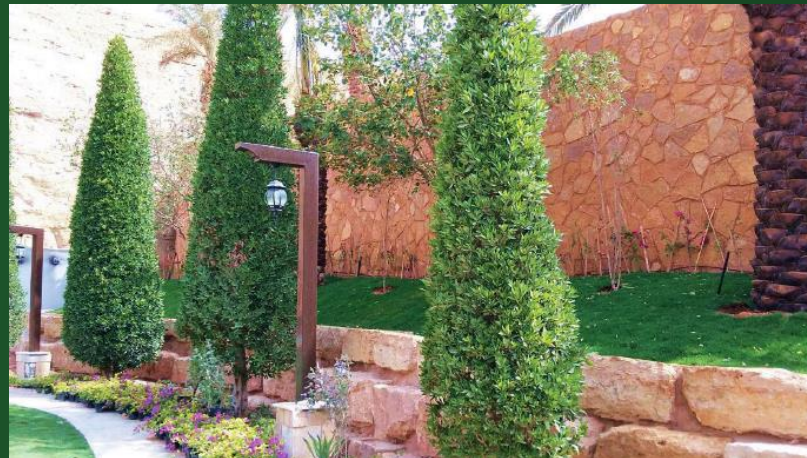


Execution and Maintenance

Project: Marvela Projects

Location: Riyadh K.S.A

Execution of Landscape, Irrigation , and Hardscape.



Executed projects

Project: The Business Gate

Location: Riyadh K.S.A

Execution of Landscape, Irrigation , and Hardscape.



Executed projects

Project: The Business Gate

Location: Riyadh K.S.A

Execution of Landscape, Irrigation , and Hardscape.



Executed projects

Project: California Resort

Location: Riyadh K.S.A

Execution of Landscape, Irrigation , and Hardscape.



Executed projects

Project: California Resort

Location: Riyadh K.S.A

Execution of Landscape, Irrigation , and Hardscape.



Executed projects

Project: Al Rahji Bank

Location: Riyadh K.S.A

Agriculture and Maintenance for Al Rahji Bank more than 211 branches all over the kingdom.



Executed projects

Project: Private Estraha

Location: Riyadh K.S.A

Execution of Landscape and Irrigation System.



Executed projects

Project: Private Estraha

Location: Riyadh K.S.A

Execution of Landscape and Irrigation System.



Executed projects

Project: Private Estraha

Location: Riyadh K.S.A

Execution of Landscape and Irrigation System.



Executed projects

Project: Football Field

Location: Hail Stadium



Executed projects

Project: Football Field

Location: Ihssa Stadium, Dammam





Execution & Maintenance

Project: Boulevard World

Location: Riyadh K.S.A 2022



Project: Boulevard World

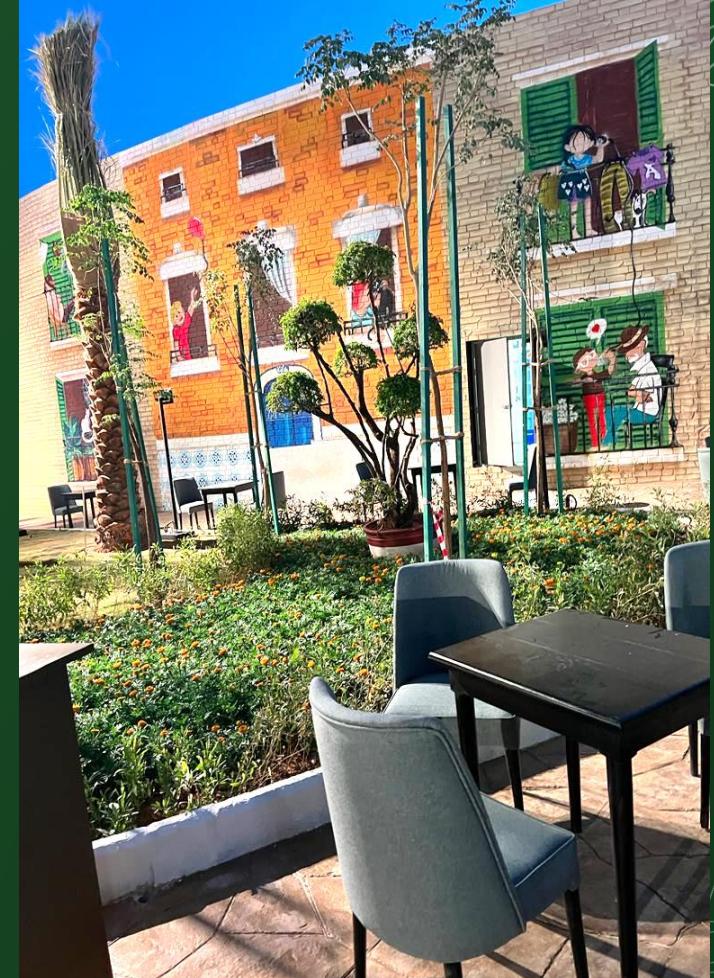
Location: Riyadh K.S.A 2022



Execution & Maintenance

Project: Boulevard World

Location: Riyadh K.S.A 2022



Execution & Maintenance

Project: Boulevard World

Location: Riyadh K.S.A 2022



Execution & Maintenance

Project: Boulevard World

Location: Riyadh K.S.A 2022



Execution & Maintenance

Project: Boulevard World

Location: Riyadh K.S.A 2022



Execution & Maintenance

Project: Boulevard World

Location: Riyadh K.S.A 2022



Executed projects

Project: Boulevard World

Location: Riyadh K.S.A 2022



Executed projects

Project: Artificial Trees
Location: Riyadh K.S.A



Executed projects

Project: Artificial Trees

Location: Riyadh K.S.A



Executed projects

Project: Artificial Softscapes

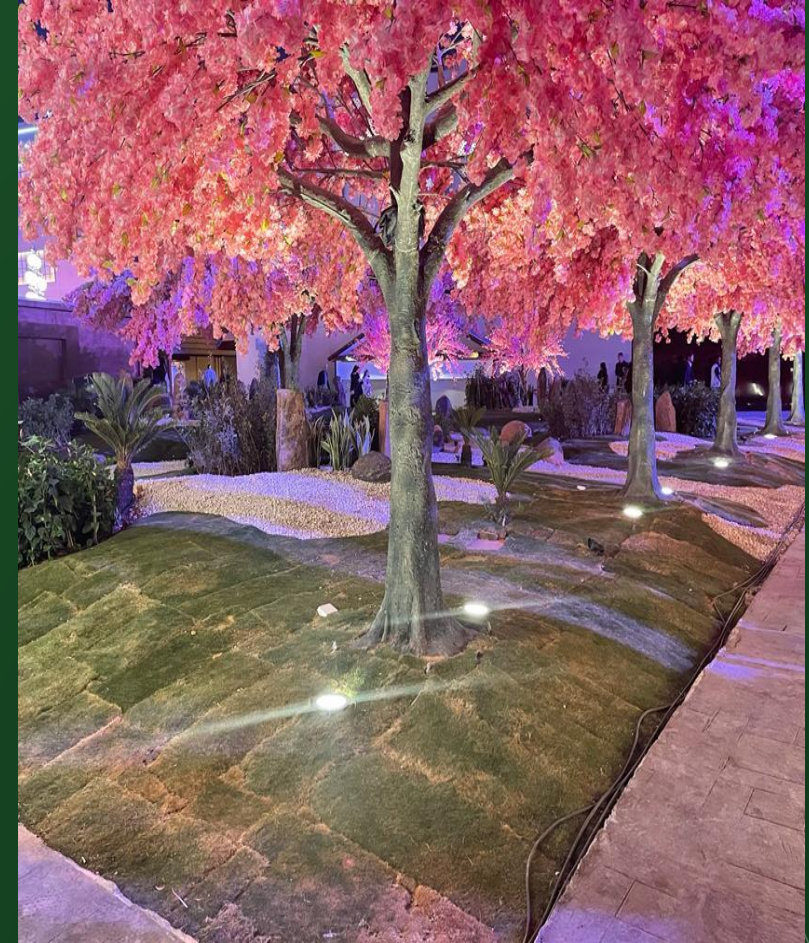
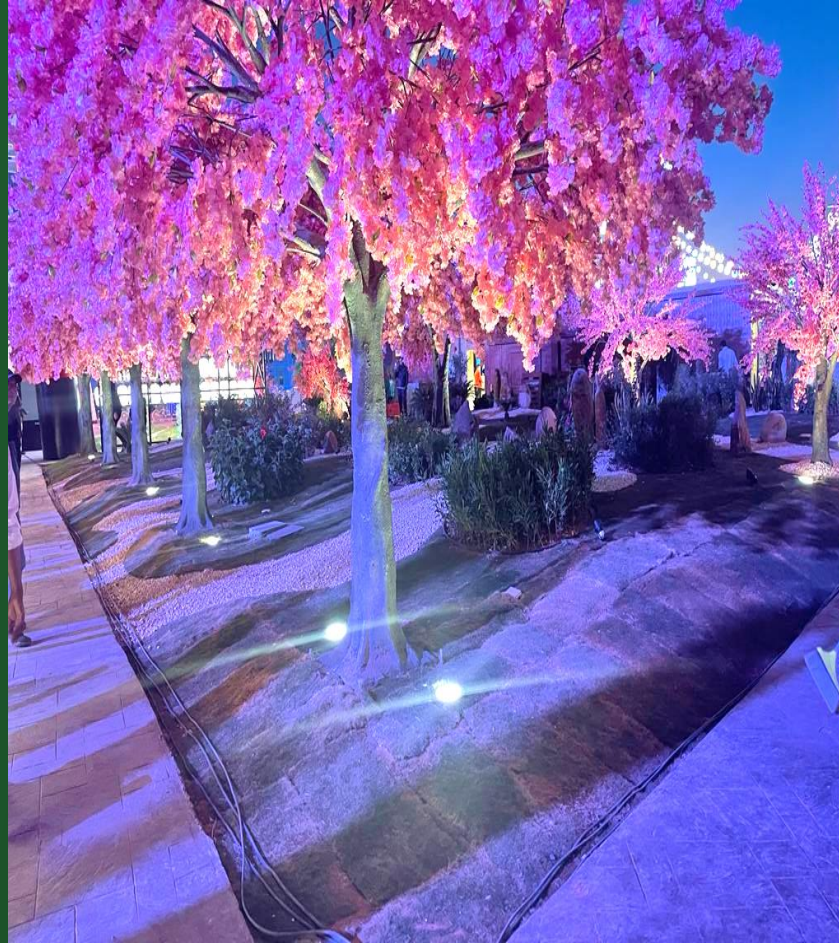
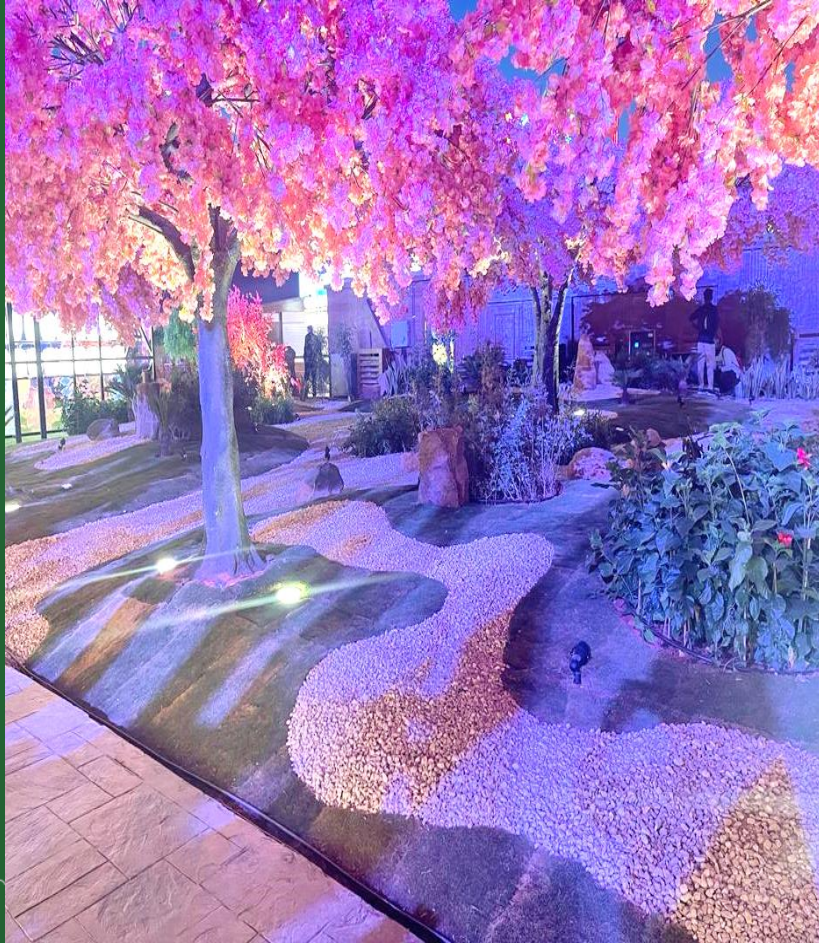
Location: Riyadh K.S.A



Executed projects

Project: Artificial Trees

Location: Riyadh K.S.A





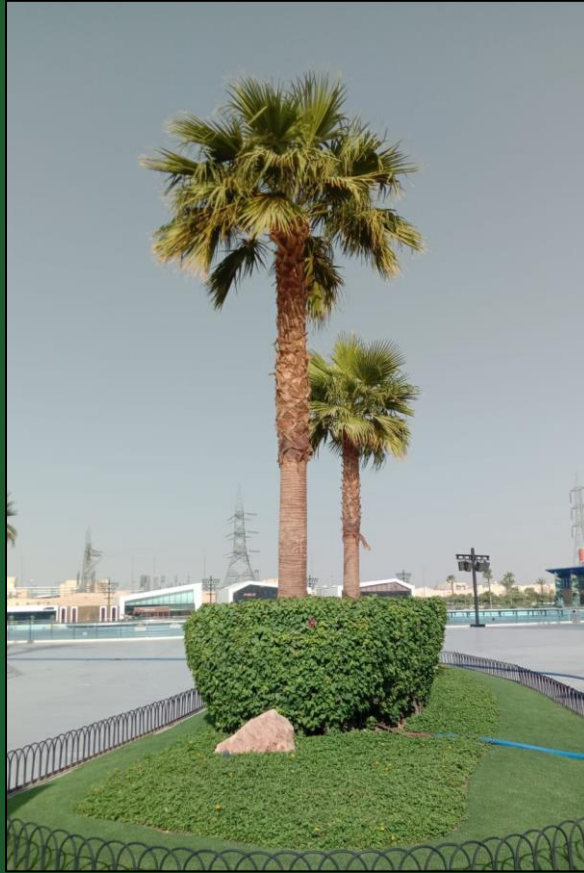
CONTRACTING

توريد المواد

Project: Boulevard City
Location: Riyadh K.S.A



Project: Boulevard City
Location: Riyadh K.S.A



Project: Boulevard City
Location: Riyadh K.S.A



Project: Boulevard City
Location: Riyadh K.S.A



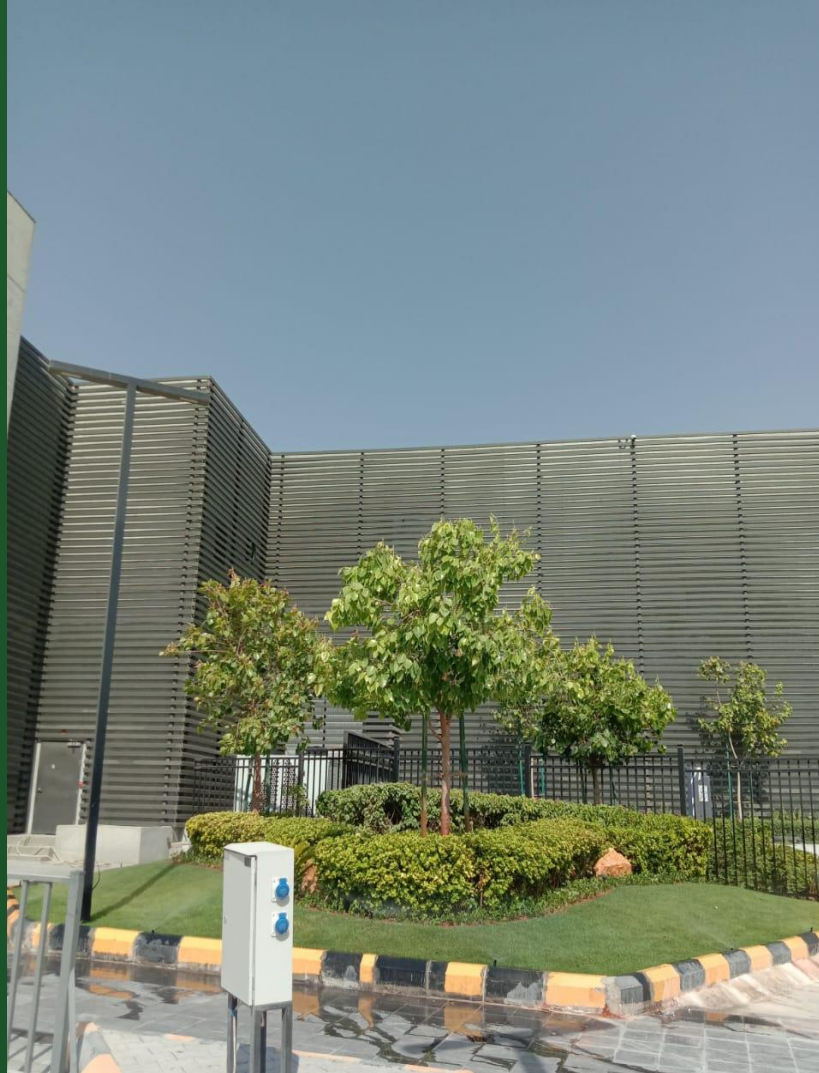
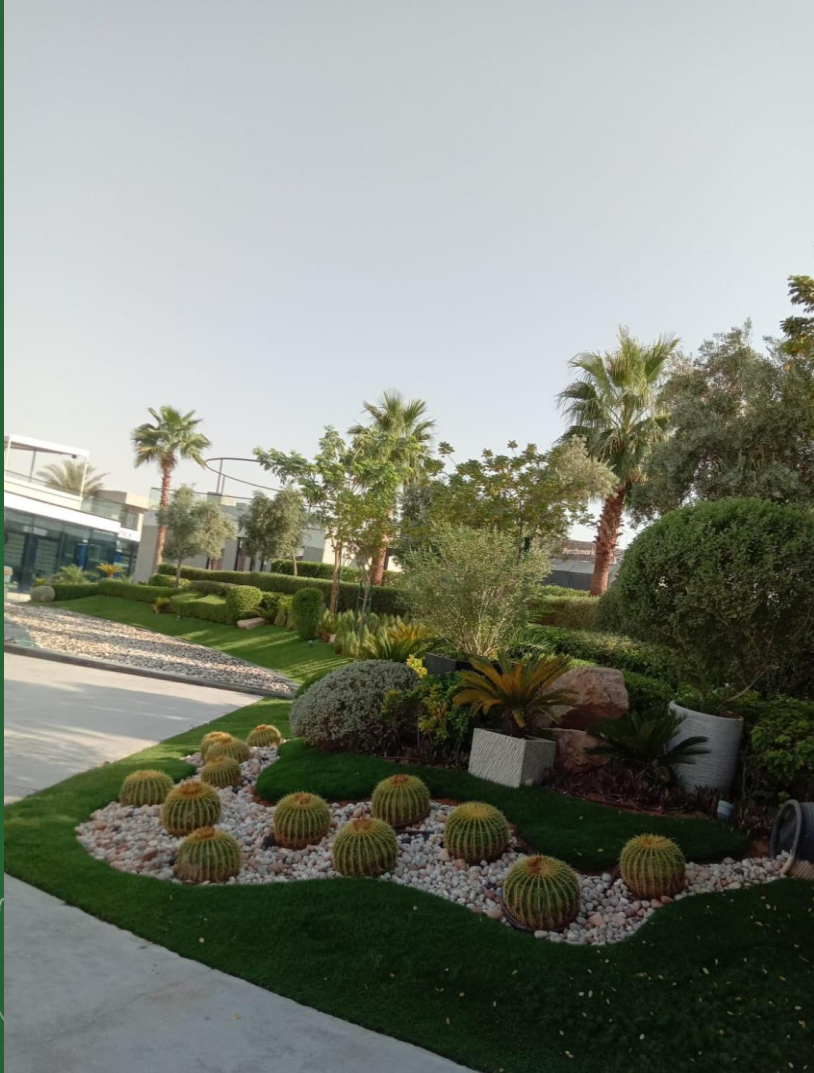


Execution & Maintenance

Project: Boulevard City
Location: Riyadh K.S.A



Project: Boulevard City
Location: Riyadh K.S.A



VVA Riyadh
قيا رياض

CONTRACTING

شركة التعاقدات

Executed projects

Project: Via Riyadh

Location: Riyadh K.S.A



Executed projects

Project: Via Riyadh

Location: Riyadh K.S.A



Executed projects

Project: Via Riyadh

Location: Riyadh K.S.A



Executed projects

Project: Via Riyadh

Location: Riyadh K.S.A



Executed projects

Project: Via Riyadh

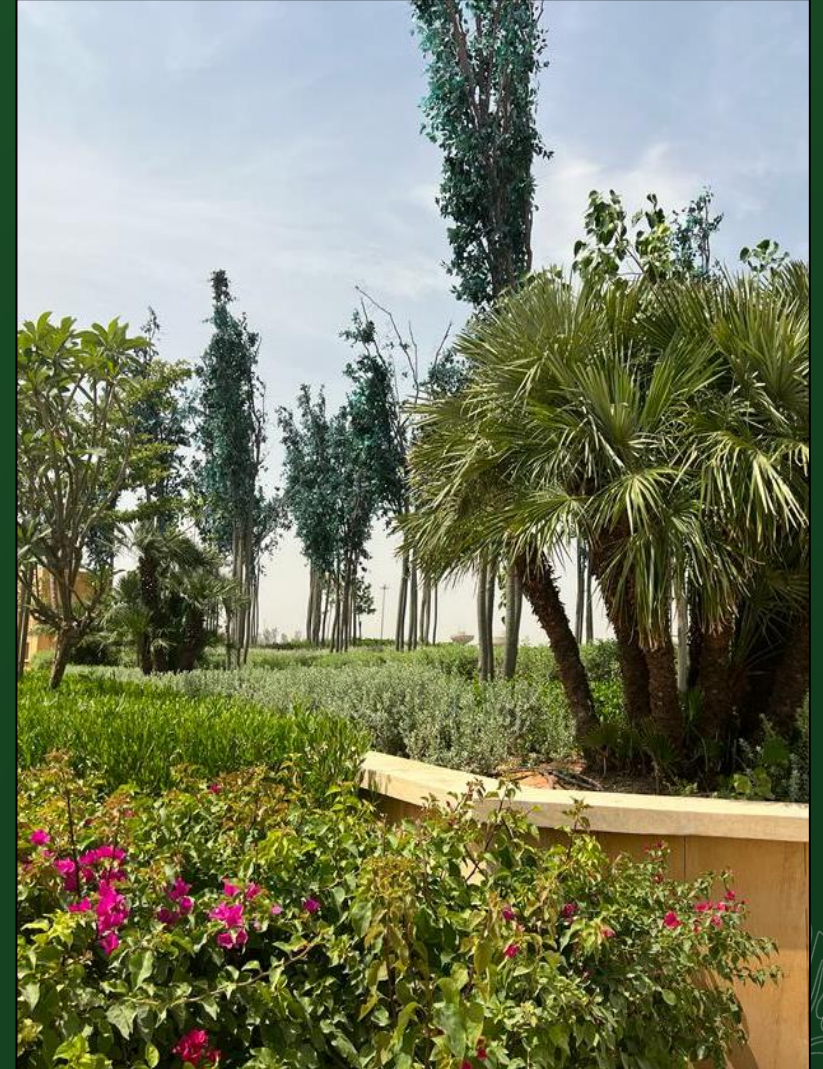
Location: Riyadh K.S.A



Executed projects

Project: Via Riyadh

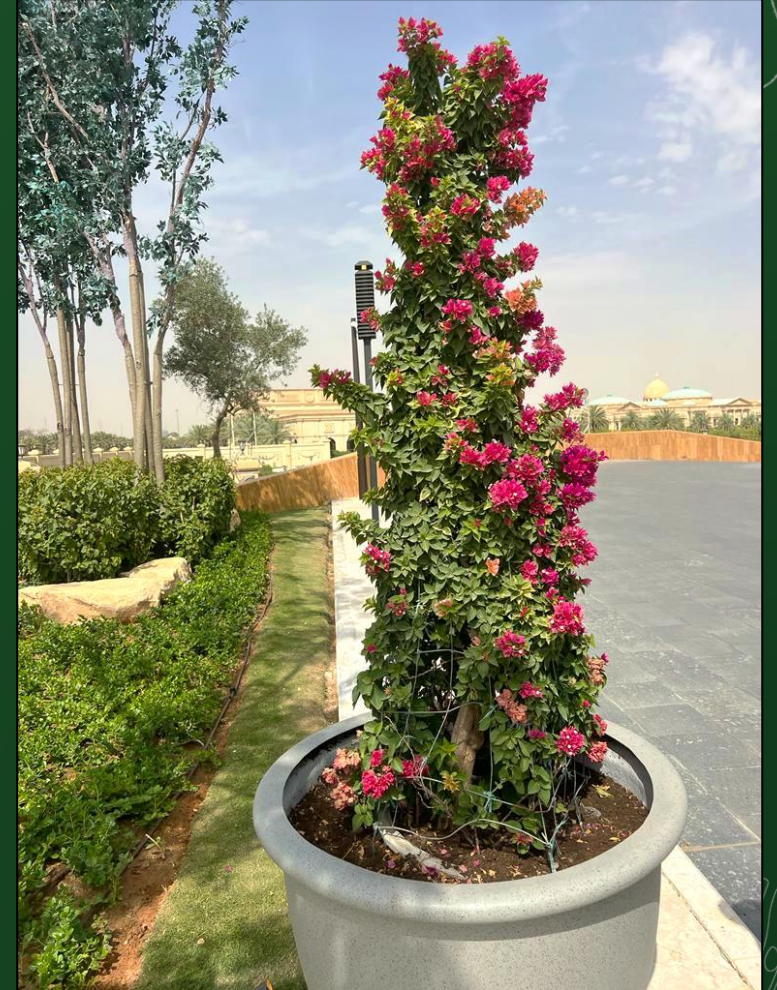
Location: Riyadh K.S.A



Executed projects

Project: Via Riyadh

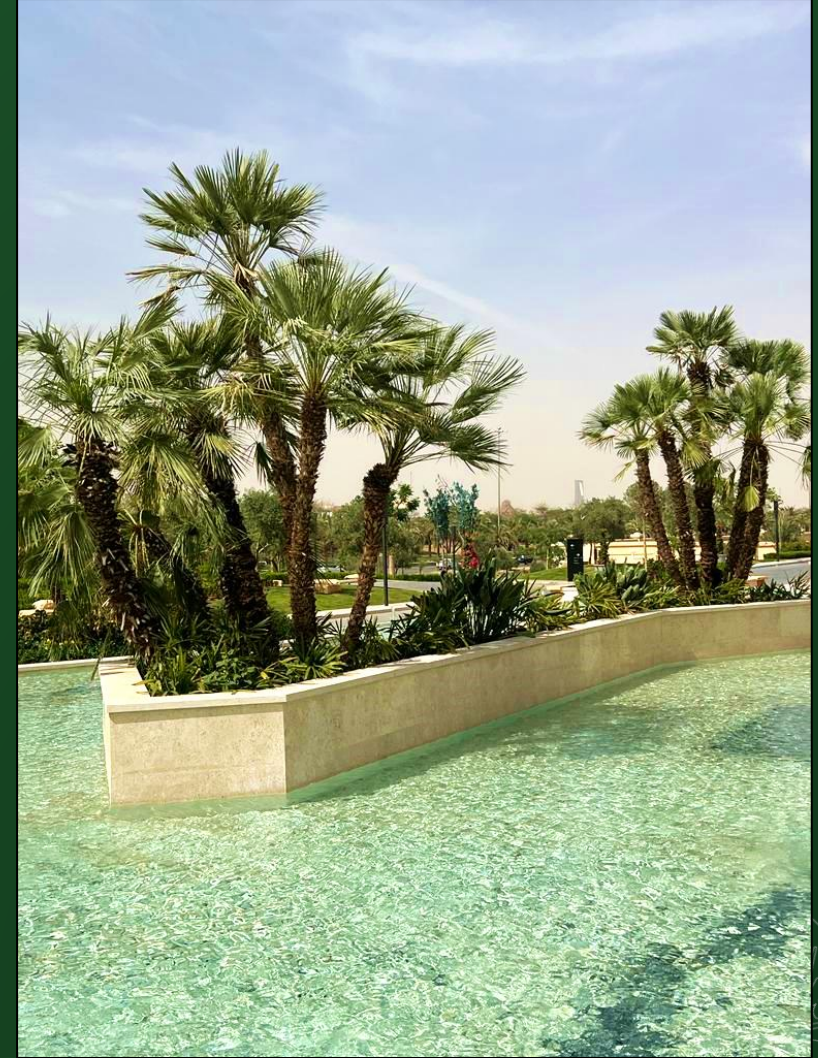
Location: Riyadh K.S.A



Executed projects

Project: Via Riyadh

Location: Riyadh K.S.A



Executed projects

Project: Via Riyadh

Location: Riyadh K.S.A





ABHA, AL GHONIEM

Amana, Aseer 2020

CONTRACTING

المقاولات

Executed projects

Project: Abha, Al Ghoniem Roundabout

Location: Amana, Aseer



Executed projects

Project: Abha, Al Ghoniem Roundabout

Location: Amana, Aseer



Executed projects

Project: Abha, Al Ghoniem Roundabout
Location: Amana, Aseer





كادن للاستثمار
Kaden Investment

Executed projects

Project: Kaden Business Front

Location: Riyadh, KSA



Executed projects

Project: Kaden Business Front

Location: Riyadh, KSA



Executed projects

Project: Kaden Business Front
Location: Riyadh, KSA



Executed projects

Project: Kaden Business Front

Location: Riyadh, KSA





Executed projects

Project: Kaden Business Front
Location: Riyadh, KSA





Executed projects

Project: Kaden Business Front
Location: Riyadh, KSA



ليسن فاليه LAYSEN valley



Project: Laysen Valley
Location: Riyadh, KSA



Execution & Maintenance

Project: Laysen Valley
Location: Riyadh, KSA



Project: Laysen Valley
Location: Riyadh, KSA



Project: Laysen Valley

Location: Riyadh, KSA



Execution & Maintenance

Project: Laysen Valley
Location: Riyadh, KSA



Project: Laysen Valley
Location: Riyadh, KSA



Project: Laysen Valley
Location: Riyadh, KSA



Project: Laysen Valley
Location: Riyadh, KSA





البوابة الاقتصادية

the business gate

Executed projects

Project: Business Gate
Location: Riyadh, KSA



Executed projects

Project: Business Gate
Location: Riyadh, KSA





Executed projects

Project: Business Gate
Location: Riyadh, KSA



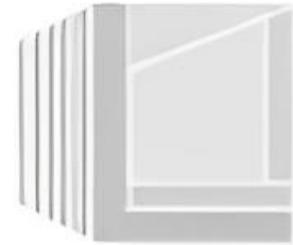


Executed projects

Project: Business Gate
Location: Riyadh, KSA



ذا لوجستكس پارڪ
The Logistics Park



CONTRACTING

بنيان البنيان

Executed projects

Project: The Logistics Park

Location: Riyadh, KSA

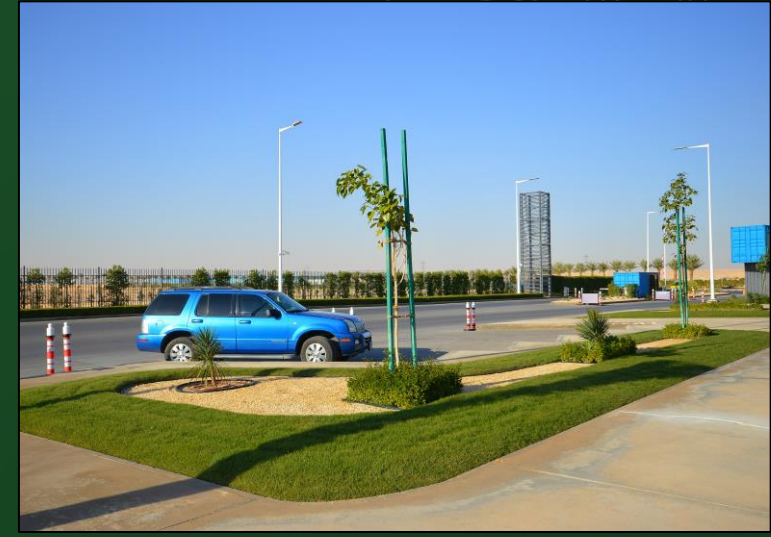




Executed projects

Project: The Logistics Park

Location: Riyadh, KSA





**WORLD
DEFENSE
SHOW**
SAUDI ARABIA

CONTRACTING

مقاولات

Executed projects

Project: World Defense Show

Location: Riyadh, KSA



Executed projects

Project: World Defense Show

Location: Riyadh, KSA





MURABBA

Riyadh, KSA

CONTRACTING

مقاولات

Executed projects

Project: Murabba

Location: Riyadh, KSA



Executed projects

Project: Murabba

Location: Riyadh, KSA



Executed projects

Project: Murabba

Location: Riyadh, KSA





Executed projects

Project: Al Nakhla Compound
Location: Riyadh, KSA



Executed projects

Project: Al Nakhla Compound

Location: Riyadh, KSA



Executed projects

Project: Al Nakhla Compound

Location: Riyadh, KSA



Executed projects

Project: Al Nakhla Compound
Location: Riyadh, KSA



Executed projects

Project: Al Nakhla Compound

Location: Riyadh, KSA



Executed projects

Project: Prince Naif Bin Sultan Palace.

Location: K.S.A

Artificial Garden



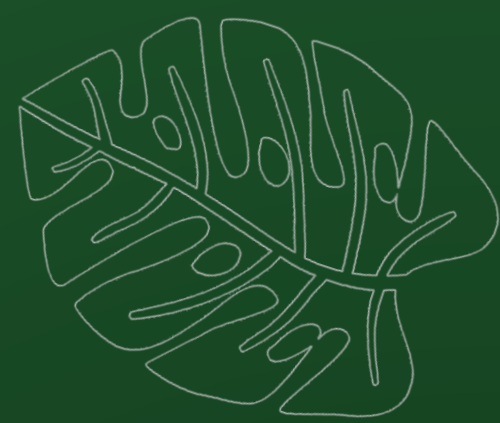
Executed projects

Project: Prince Naif Bin Sultan Palace.

Location: K.S.A

Artificial Garden





Garden Maintenance

We are devoted to provide maintenance services and environmental care and ground surfaces as well as in irrigation system and pumps periodically, as it develops trees and seasonal flowers according to the season of the year.



Garden Maintenance

Project: Kaden Fashion

Location: Riyadh K.S.A



Project: Kaden Fashion

Location: Riyadh K.S.A



Garden Maintenance

Project: Kaden Fashion

Location: Riyadh K.S.A



Garden Maintenance

Project: The Business Gate

Location: Riyadh K.S.A



Garden Maintenance

Project: Al Nakhla Residence

Location: Riyadh K.S.A





Garden Maintenance

Project: Home Offices

Location: Riyadh K.S.A





Garden Maintenance

Project: Home Offices

Location: Riyadh K.S.A





Garden Maintenance

Project: Boulevard World

Location: Riyadh K.S.A





Garden Maintenance

Project: Boulevard World

Location: Riyadh K.S.A



Garden Maintenance

Project: Boulevard World

Location: Riyadh K.S.A



Garden Maintenance

Project: Boulevard World

Location: Riyadh K.S.A

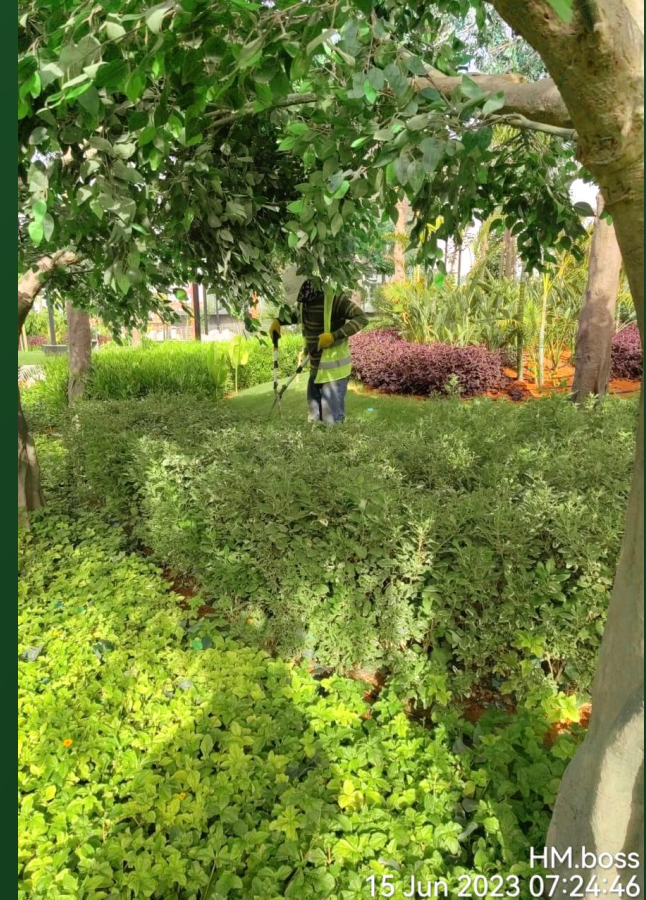




Garden Maintenance

Project: Boulevard World

Location: Riyadh K.S.A





Garden Maintenance

Project: Boulevard World

Location: Riyadh K.S.A



Project: Via Riyadh

Location: Riyadh K.S.A



Garden Maintenance

Project: Via Riyadh

Location: Riyadh K.S.A





Garden Maintenance

Project: Via Riyadh

Location: Riyadh K.S.A



Garden Maintenance

Project: Laysen Valley
Location: Riyadh K.S.A





Garden Maintenance

Location: Riyadh K.S.A





Garden Maintenance for Al Rahji Bank

Location: Riyadh K.S.A



Garden Maintenance for Saudi Investment Bank

Location: Riyadh K.S.A



Indoor Garden Execution and Maintenance

Location: Riyadh K.S.A



Indoor Garden Execution and Maintenance





Nursery

NBT Contracting Est. provides all kinds of trees, plants, indoor and outdoor seasonal flowers and natural evangelical and also imports trees and seeds from other countries which suit with the climate of the Kingdom.



Our Nursery:



Imported Trees & Shrubs



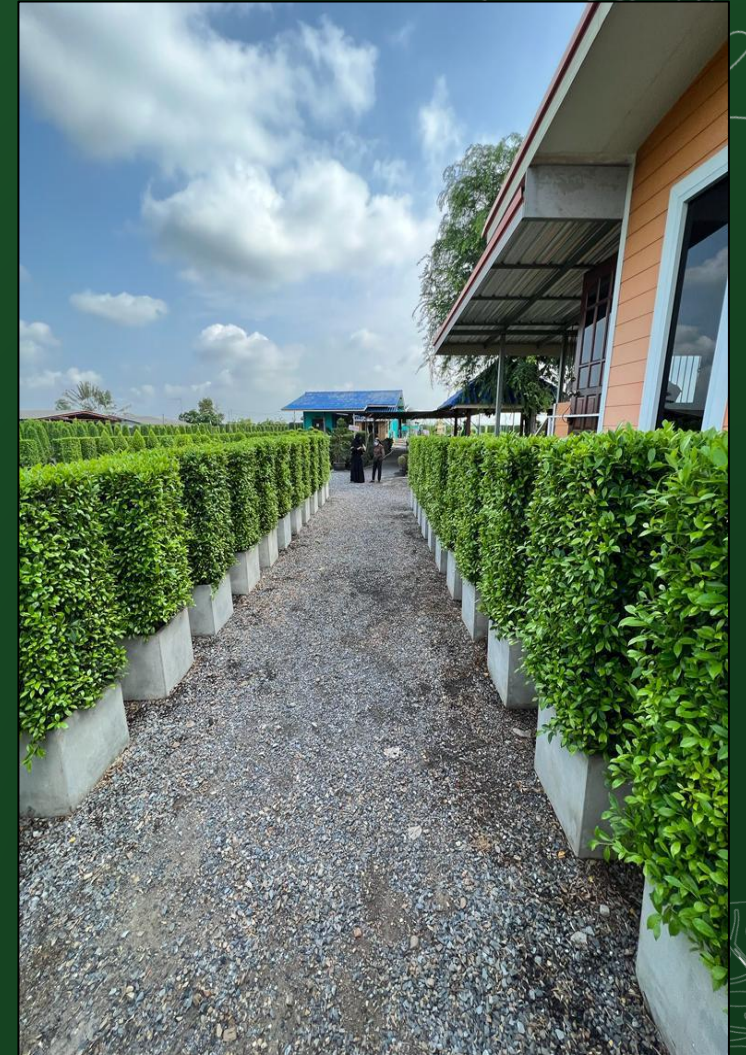
Imported Trees & Shrubs



Imported Trees & Shrubs



Imported Trees & Shrubs



Imported Trees & Shrubs



Imported Trees & Shrubs



Imported Trees & Shrubs



Imported Trees & Shrubs



Imported Trees & Shrubs





MAINTENANCE & CLEANING

CONTRACTING

توريد النظافة

Maintenance, cleaning and operation:

NBT Contracting Est. Branch for maintenance, cleaning and operation is qualified nationally to provide the public and private sectors in the kingdom of Saudi Arabia with all services in the field of maintenance, cleaning and operation conforming to Int'l quality standards.

The management of NBT Contracting Est. Branch for maintenance, cleaning and operation depends on the high int'l qualified managers who have great and wide experience in the field of management, projects control, etc. so that to have the client's confidence and satisfaction. Also, the management of NBT Contracting Est. Branch for maintenance, cleaning and operation has high level material and human resources capabilities including the technical team whose members have wide experience in management.

Our Practical goals:

- Decreasing operation costs
- Increasing equipment life
- Decreasing the waste time as a result of trouble shooting
- Activating the safety aspects

Cleaning and Maintenance:

Project: Maintenance and Cleaning of Buidlings and Public Facilities

Location: Riyadh, KSA



Cleaning and Maintenance:

Project: Maintenance and Cleaning of Buidlings and Public Facilities

Location: Riyadh, KSA



Cleaning and Maintenance:

Project: Maintenance and Cleaning of Buidlings and Public Facilities

Location: Riyadh, KSA



Cleaning and Maintenance:

Project: Maintenance and Cleaning of Buidlings and Public Facilities

Location: Riyadh, KSA



Cleaning and Maintenance:

Project: Maintenance of Escalator and Elevator

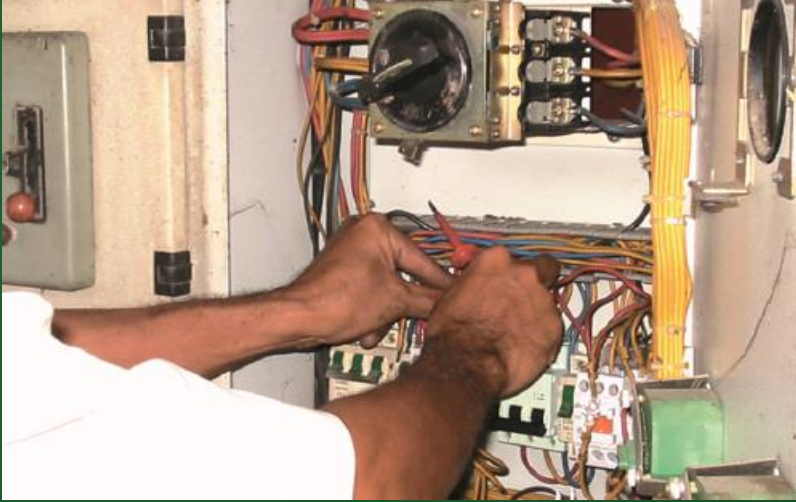
Location: Riyadh, KSA



Cleaning and Maintenance:

Project: Maintenance of Electrical Works and Airconditioning System and Ventilation Works

Location: Riyadh, KSA



Cleaning and Maintenance:

Project: Maintenance of Electrical Works and Airconditioning System and Ventilation Works

Location: Riyadh, KSA





LIST OF CLIENTS



CONTRACTING

شركة التعاقد

SOME OF OUR CLIENTS

- Al Rajhi Bank (more than 60 branches throughout the Kingdom)
- Al Qassi International Co.
- ALARGAN CO
- Project home office
- Al Mobdeeoun Group
- First real estate company Entertainment First
- Al Anoud Tower
- Smart Tower
- Localizer Mall
- Centria Mall
- Fal Mall
- Arga Mall
- Astra Mall
- Al Khurayf mall
- Al Jazeera Mall
- Al Uroba Building
- Coral Sulaymaniyah Hotel
- Dom Hotel
- Royal Hotel
- Mercure Hotel
- Qasr The Prince Faisal bin Sattam
- Qasr Shikh Melahi Bin Saeedan
- Qasr Dr Abdul Rahman Al Bunyan
- Qasr Tamer Al-Omair
- Qasr Abd al-Aziz Al-Omair
- Qasr Suhail Al-Omair
- Qasr Sari Omair
- Qasr Khaled Habib
- Qasr Sheikh Turjum Bin Saeedan
- Qasr Sheikh Salama Bin Melahi
- Qasr Waleed Alhokair Qasr Esam Deghaither
- Villa Fahd Ba Cader
- Villa lyad Al Bunyan
- Break Professor Khaled Al Bunyan
- Break Badr bin Said
- Break Mohammed bin Said
- Mohammad Al Dakhil
- Hossam Al Saleh
- Hisham Al Shathry
- Saud Al Shathry
- Naif Ruwaili
- Abdul Mohsen Al Touque
- Ibrahim Al Touque
- Turki Ibrahim
- Faisal Al-Melhem
- Bandar Al Mouamer
- Abdul Aziz al-Athel
- Salman Al-Athel
- Saud Al-Athel
- Jawaher Al-Athel
- Sultan Al Sammari
- Abdul Rahman Al Sammari
- Sela Sports
- Boulevard World
- Boulevard City
- Via Riyadh
- Jeddah Promenade
- Business Gate
- Al Nakhla Compound
- Laysen Valley
- Saudi Investment Bank
- Al Ouja Palace
- Al Ghobaira Farm
- Marvela
- Al Nafoud Farm
- Jaziah Farm
- Al Sidra Farm
- Kaden Investment
- The Logistics Park
- WDS (World Defense Show Riyadh
- Al Wassel Farm
- STC Head Office Compound Riyadh

OUR CLIENTS IN MAINTENANCE & CLEANING PROJECTS:

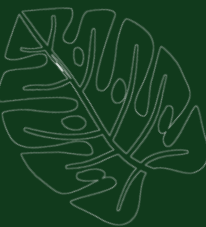
- STC (more than 246 branches across the Kingdom)
- Tatweer Towers
- Directorate General of Youth Welfare
- ALARGAN CO.
- Project home office
- Sports Medicine Hospital
- Smart Tower
- Localizer Mall
- Centria Mall
- Fal Mall
- Astra Mall
- Al Khurayf mall
- Al Jazeera Mall
- Al Uroba Building
- Coral Sulaymaniyah Hotel
- Dom Hotel
- Royal Hotel
- Mercure Hotel
- Ibrahim Al Touque
- Hossam Al Saleh
- Saud Al Shathry



LETTER OF APPRECIATION FROM OUR CLIENT

CONTRACTING

Company, LLC



Client's Letter of Appreciation



A WORD OF APPRECIATION

With great gratitude, Jazeera Compound would like to take the chance and thank the team of "Inshaat", including management and labors who do a great job in landscaping and maintaining our compound's gardens to keep them as beautiful as they can be.

Sincerely,


Malak Khairy

Compound Manager



Fal Residential Compound

مجمع فال السكني

6th May 2009


TO WHOM IT MAY CONCERN

This is to certify that we **FAL Residential Compound**, a division of **Saudi FAL Group of Companies** have been dealing with **INSHAAT** for the Landscaping Maintenance of our compound from **January 01, 2008 up to present**.

This certification was issued for INSHAAT to verify their Contract / Agreement with us and for their future references.

For further queries, please feel free to call us anytime.

Best Regards,


Bassam Ahmed Jarrar
Compound Manager
FAL Residential Compound



I thank you for choosing the Dome Hotel
شكرا لاختياركم فندق واجنحة دوم.

GUEST FOLIC

Date : May 8 2007

TO Whom It May Concern

We would like to inform you that **INCHAAT LANDSCAPIC** Establishment are constructing our gardens and doing all gardens landscaping works , in addition to the gardens periodic maintaining and its utilities.

INCHAAT LANDSCAPIC Establishment shows a high potency in the gardens maintaining and they are doing all the related works with our required standards.

Thank you ,



Manger

Signature:

التوقيع:



web site : [http // www.rdcg-sa.com](http://www.rdcg-sa.com)

P.O Box 33554 Riyadh 11458
Tel : (966.1) 245 3919
Fax : (966.1) 245 3989

Client's Letter of Appreciation



شهادة إنجاز

التاريخ: 1436/1/26 هـ
الموافق: 2015/09/10 م

إلى من يهمه الأمر

نفيدكم نحن / شركة عين المتقدمة بان شركة / انشادات للمقاولات وتنسيق الحدائق سجل تجاري رقم 1010209099 قد شركت معنا بأعمال عدد (أعمال توريد وتنفيذ أعمال التشجير وشبكة الري بالموقع العام وتوريد وفرد التربة للزراعة) الخاصة بمشروع بناء قصر خاص بالدرجة والتي قامت شركتنا بتنفيذ بمدة عدد (سنة ميلادية) وقد أبدوا حسن التنفيذ بدرجة ممتازة وخبرة وكفاءة عالية وتم استلام أعمال القعت برضاء تام ونحن نشكركم على ما قدموه للشركة خلال فترة التنفيذ من خبرات عالية ودعمت وساهمت في نجاح المشروع ورضاء العميل بالمستوى المطلوب.

ونتمنى لهم دوام التوفيق والسداد

وتقبلوا فائق الاحترام والتقدير

عبد الإله بن أحمد الرشودي
الرئيس التنفيذي



بِسْمِ اللَّهِ الرَّحْمَنِ الرَّحِيمِ
شركة واحات الحمراء
للإدارة المجمعات السكنية
ذات مسئولية محدودة



تاريخ: ١٤٣٦/١١/٢٢
موقع: ٢٠١٥/٠٩/٠٦

لمن يهمه الأمر

السلام عليكم ورحمة الله وبركاته ،،،،

نفيدكم نحن شركة واحلت العمراء لإدارة المجمعات السكنية بالقرى بأن مؤسسة انشاءات للمقاولات وتنسيق الحدائق تقوم بكافة اعمال الصيانة وتنسيق الحدائق لمجمع اسنرا السكني التابع لنا وذلك من خلال اطقم صيانة فنية ومزد فرابة خمس سنوات وعلى اكل وجه وإلى حد فاعنا ومن خلال عقد سنوي متجدد.

وقد أعطيت هذه الشهادة بناء على طلب المؤسسة.

شركة واحات الحمراء لإدارة المجمعات السكنية



ص. ب. ٦١٨٣٥ الرياض ١١٥٧٥ - المملكة العربية السعودية - هاتف ٢٤٩٠٤٤٠ - فاكس ٢٤٨٣٦٢٨
رأس المال المدفوع ١,٠٠٠,٠٠٠ ريال سعودي



Certification of Thanks & Appreciation

Tuesday, September 01, 2015

Whomever It may Concern

المحترمين

التي من يهمة الأمر

المسألة

السلام عليكم ورحمة الله وبركاته ،،

We "Idara Al Aqaria Co", pleased to extend our gratitude for Inshaat Contracting & Landscaping Est for the efforts The beginning of the year 2011 which they made in the field of landscaping and garden maintenance as well as in outdoor cleaning for all over the complex of Business Gate. We always found you sincere, dedicated and role model in completion of works which were handed over to you and we pray to Al mighty Allah to grant you success and bright future.

Thanks for your cooperation

يشرفنا نحن شركة الإنارة العقارية أن نقدم لمؤسسة إقامات المقاولات وتنسيق الحدائق بجزيرة الشكر والتقدير على ما تبذلوه بداية من عام 2011، وحتى تاريخه من مجهود في خدمة سبيلنا العزيزة الزراعة والمساحات الخضراء وتنسيق الحدائق وأعمال الطليقة الخارجية لمجمع الهواء الاصطناعي فلقد عهدنا منكم دوماً بالإخلاص والتقني والجدادة في إنجاز ما نكلفن به من أعمال حتى نتمكن من تواجدها بمتعة به ولقد الله من أجل أن يوفقكم دائماً مع أطيب أمنياتنا وبالمستقبل بالخير والتوفيق والسداد.

شكراً لحسن تعاونكم .

جك متي
مدير الممتلكات



المجلة الدولية للتقارير المالية - 2009
KSA P.O. Box 33884, Riyadh 11466 Tel. +966 11 8330777 Fax. +966 11 2539100

Client's Letter of Appreciation

مصرف الراجحي Al Rajhi Bank

الرقم : SRPD20/08/2015

2015/08/27م

الى من يهمني الأمر

السلام عليكم ورحمة الله وبركاته

نفيدكم ان مؤسسة إنشاءات للمقاولات وتنسيق الحدائق هي المقاول الحصري معنا في تنفيذ أعمال الزراعة وشبكات الري وتنسيق المسطحات الخضراء بجميع فروع المصرف بكل أنحاء ومناطق المملكة منذ سنة 2010م وحتى تاريخه .

حيث كان أداء الشركة مثلاً يحتذى به بالنفاذ ودقة الأداء وسرعة الاستجابة وعليه فإن إدارة علاقات الموردين تشكر مؤسسة إنشاءات للمقاولات وتنسيق الحدائق مع تمنياتنا بالتوفيق والنجاح والله الموفق.



ياسر بن علي الظاهري

مدير علاقات الموردين

شركة الراجحي المصرفية للاستثمار
قائمة بسمهورية سعوديئة برأس مال 15,000,000,000 ريال مريت رقم ٩٦
ص ب ٣٨ الرياض ١١٤٦١ المملكة العربية السعودية
هاتف 4666 1 21 6000 فاكس 4666 1 21 6000
Al Rajhi Banking & Investment Corp.
Saudi Joint Stock Corp. With a Capital of S.R. 15,000,000,000 C.R. No. 96
P.O Box 38 Riyadh 11461 Kingdom of Saudi Arabia
Tel : +966 1 216000 Fax : +966 1 216000
www.alrajhi.com.sa



شهادة شكر وتقدير

السلام عليكم ورحمة الله وبركاته ..

يسر إدارة شركة دار بس أن تقدم لكم مؤسسة إنشاءات للمقاولات وتنسيق الحدائق الشكر الجزيل على الجهد الذي بذلتموه خلال فترة عملكم منذ تاريخ ١٠ / ٠١ / ٢٠١١ م تاريخ بداية عقدنا معكم عقد تنفيذ أعمال الزراعة وشبكات الري وتنسيق المسطحات الخضراء لجمع ومباني البوابة الاقتصادية بمدينة الرياض مما كان له اكبر الأثر لا ما وصلت إليه البوابة الاقتصادية حالياً .

تمنياتنا لكم وزملائكم الإداريين والمراقبين ومديري الموقع والمشرفين وجميع الأعضاء من القائمين على هذا الجهد مزيداً من التوفيق والعمل المخلص والمجهود الرائع ونحن إذ نقدر لكم ذلك نسأل الله تعالى أن يوفقكم ويسدد خطاكم .

والله العفو ..

رئيس مجلس الإدارة

بدر عبدالعزيز بن سعيد



شركة دار بس للمقاولات
Kingdom of Saudi Arabia
P.O.Box 9006 Riyadh 11462
Tel : + 9 2 0 0 0 2 7 7
Fax : +966 (11) 5015171
www.basco.com.sa



Fal Residential Compound

مجمع فال السكني

التاريخ: 2015/11/1

السادة/ مؤسسة إنشاءات للمقاولات وتنسيق الحدائق المحترمين
السلام عليكم ورحمة الله وبركاته،،،

اشارة الى كتابكم المرسل إلينا بتاريخ 2015/8/17م، نود إعلامكم بأنه تم توقيع عقد صيانة الحديقة بتاريخ 2008/3/5م والذي يشمل زراعة الزهور الموسمية بعدد (10.000) زهرة وكذلك الزهور الدائمة بعدد (2.000) زهرة. وتخصيص العمالة الماهرة وذات الخبرة بعدد (10) عمال يومياً إضافة الى عدد واحد مشرف وكذلك أعمال الصيانة وتشغيل نظام الري ورعاية النباتات وحراثة التربة والتعمد بتقليب التربة وإزالة الحشائش والأعشاب الضارة وكذلك قص وتهذيب الأشجار والتشجير والاستعمال الدوري للأسمدة والقضاء على الحشائش الضار وتسميد جميع المواقع وتنظيف وإزالة المخلفات النباتية والأوراق، وكذلك تم توقيع عقد نظافة بتاريخ 2009/05/01م وذلك للقيام بأعمال النظافة بالمجمع، وعليه تخصيص العمالة الماهرة وذات الخبرة للعمل بالمشروع على أن لا يقل عدد العاملين عن (9) أشخاص بالإضافة الى مشرف وتنظيف الشوارع والأرصفة والمشيات والشوارع الخاص بالمجمع حول السور ومواقف السيارات وتكون الزيارة من السبت الى الخميس وبواقع (8) ساعات يومياً مع العلم بأن الخدمة المقدمة جيدة والعمل يقومون بعملهم.

وتقبلوا أطيب تحياتنا،،،

مديرة المجمع
هلا فهد العجل



Client's Letter of Appreciation



تاريخ: 2015/09/13

السادة / إلى من يهمه الأمر :

السلام عليكم ورحمة الله وبركاته

نود التنويه بأن إدارة مجمع البيوت المكتبية قد تعاقدت مع شركة إنشاءات للمقاولات و تنسيق الحدائق لإبتداء من 2011 حتى تاريخه، وذلك للخبرة المتميزة و للمستوى العالي في تنسيق وصيانة الحدائق حيث شملت:

- صيانة و تشغيل نظام الري.
- رعاية النباتات و حراثة للتربة.
- تنظيف الحدائق بشكل دوري.
- قص و تهذيب الأشجار .
- تسميد جميع المواقع و الحدائق.

شاكرين لكم تعاونكم وحسن خدمتكم .




PO Box 7828, Riyadh 11244, K.S.A
T: +966 11 511 77 11, F: +966 11 511 8660
E: info@alnakhl-sa.com, www.alnakhl-sa.com

1436/11/18
2015/09/02 م

بسم الله الرحمن الرحيم

السلام عليكم ورحمة الله وبركاته وبعد ...

الموضوع : إفادة عن مؤسسة الإنشاءات للمقاولات وتنسيق الحدائق ...

إشارة إلى الموضوع أعلاه ، نفيدكم أننا متعاقدين مع مؤسسة إنشاءات للمقاولات وتنسيق الحدائق منذ أكتوبر 2013 في مشروعنا مجمع مدينة النخلة للمزاري الأطراف التي يشغل مساحة تقارب 325 ألف متر مربع وتتخلله الحدائق والزرع والمرافق المائية وقد رأينا من إدارة إنشاءات وموظفيها احترافية في تنفيذ المخططات الخاصة بتنسيق الحدائق والالتزام تام بكل تفصيله مما أدى في النهاية إلى إخراج المجمع بصورة راقية ومفعمة بالحياة فضلاً عن أنهم هم للمقاول المسئول حالياً عن رعاية الحدائق وتطويرها وجميع أعمال الزراعة والري والتطافه الداخلية والخارجية، ولنسال الله لنا ولهم التوفيق.

وتقبلوا خالص التحية والتقدير ...

والسلام عليكم ورحمة الله وبركاته ...

المدير العام

حزام بن ملي بن سهيدان



البنك السعودي للاستثمار
The Saudi Investment Bank

بشهادة شكر وتقدير

السلام عليكم ورحمة الله وبركاته ..

يطيب لنا نحن / بنك الإستثمار أن نتقدم بخالص الشكر والتقدير الى / مؤسسة إنشاءات للمقاولات وتنسيق الحدائق على تعاونكم ومشاركتكم الفعالة وما بذلتموه من جهد خلال فترة عملكم كمقاول لتنفيذ أعمال إنشاء وصيانة المزروعات والمساحات الخضراء وشبكات الري بفروع البنك بجمع مناطق المملكة وذلك من تاريخ 01 / 06 / 2015 م وقد لمسنا من مؤسستكم سرعة الأداء وإنجاز المهام الموكلة إليكم بكل إتقان ..

تمنياتنا لكم دوام التفوق والنجاح ... والله الموفق .



مدير إدارة العقود والمستعديرات

Client's Letter of Appreciation



التاريخ: ١٤٣٦/١١/١٩
الرقم: ٢٠١٤/٩/٣

السادة / شركة إنشاءات للمقاولات وتنسيق الحدائق

السلام عليكم ورحمة الله وبركاته ...

الموضوع: خطاب شكر وتقدير

بمستدنا نحن شركة البوابة الاقتصادية أن نقدم ببالغ الشكر والتقدير لشركة إنشاءات للمقاولات وتنسيق الحدائق على أدائها الرائع والمميز في مشروعنا العملاق وهي التي قامت بجميع أعمال الزراعة والتشجير منذ بدء المشروع وحتى تم الإنتهاء منه، كما نشهد لها بالكفاءة في إدارة تنسيق الحدائق وصيانة شبكات الري ونظافة المواقع العام. ونشكرها من جديد من التوفيق والنجاح.

شاكركم ومقدرين حسن تعاونكم الدائم ...

وتقبلوا خالص التحية والتقدير ...

والسلام عليكم ورحمة الله وبركاته ...

العضو المنتدب

محمد بن أحمد الضبعان



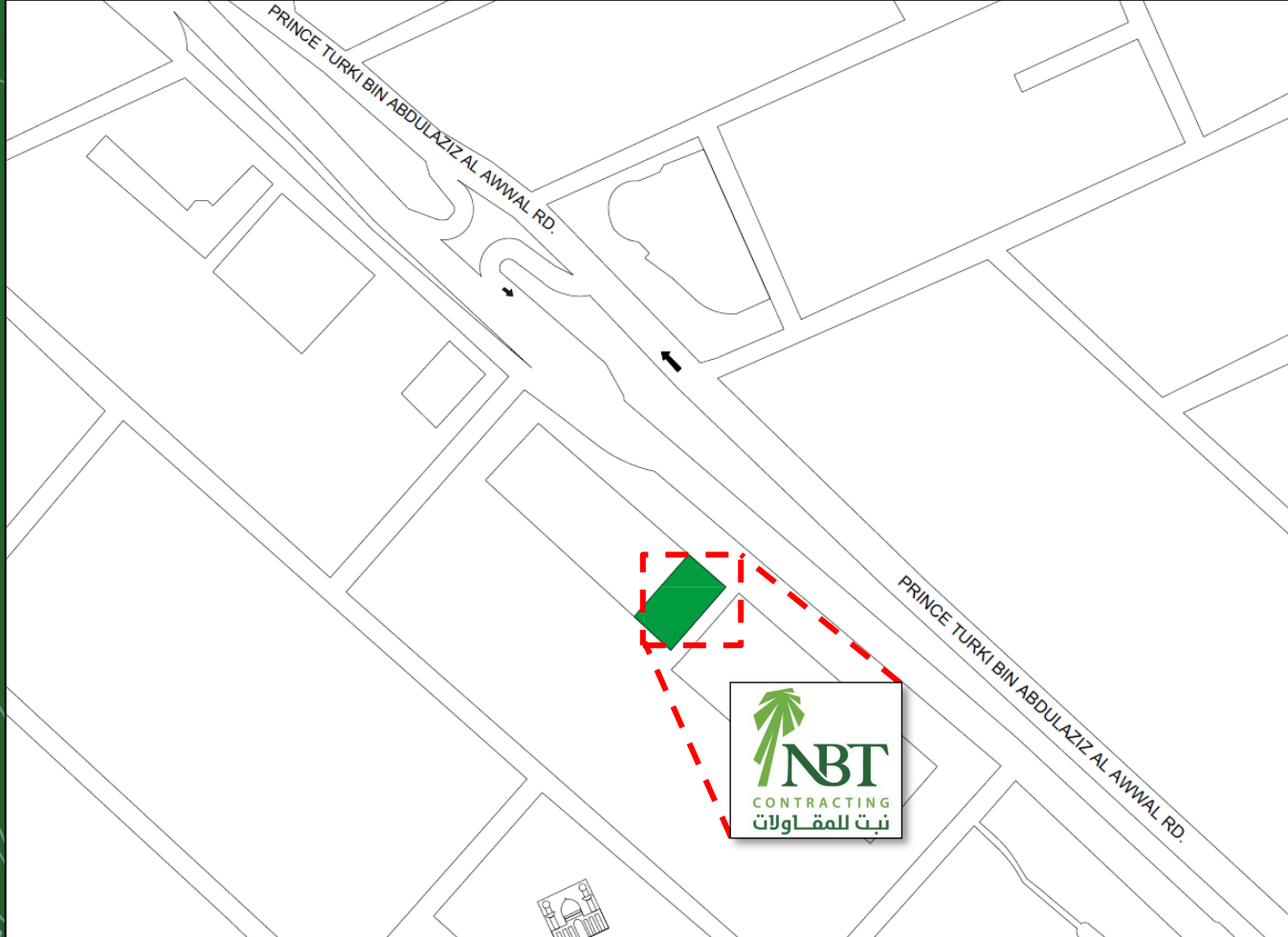


OFFICE LOCATION

CONTRACTING

بنيان المقاولات

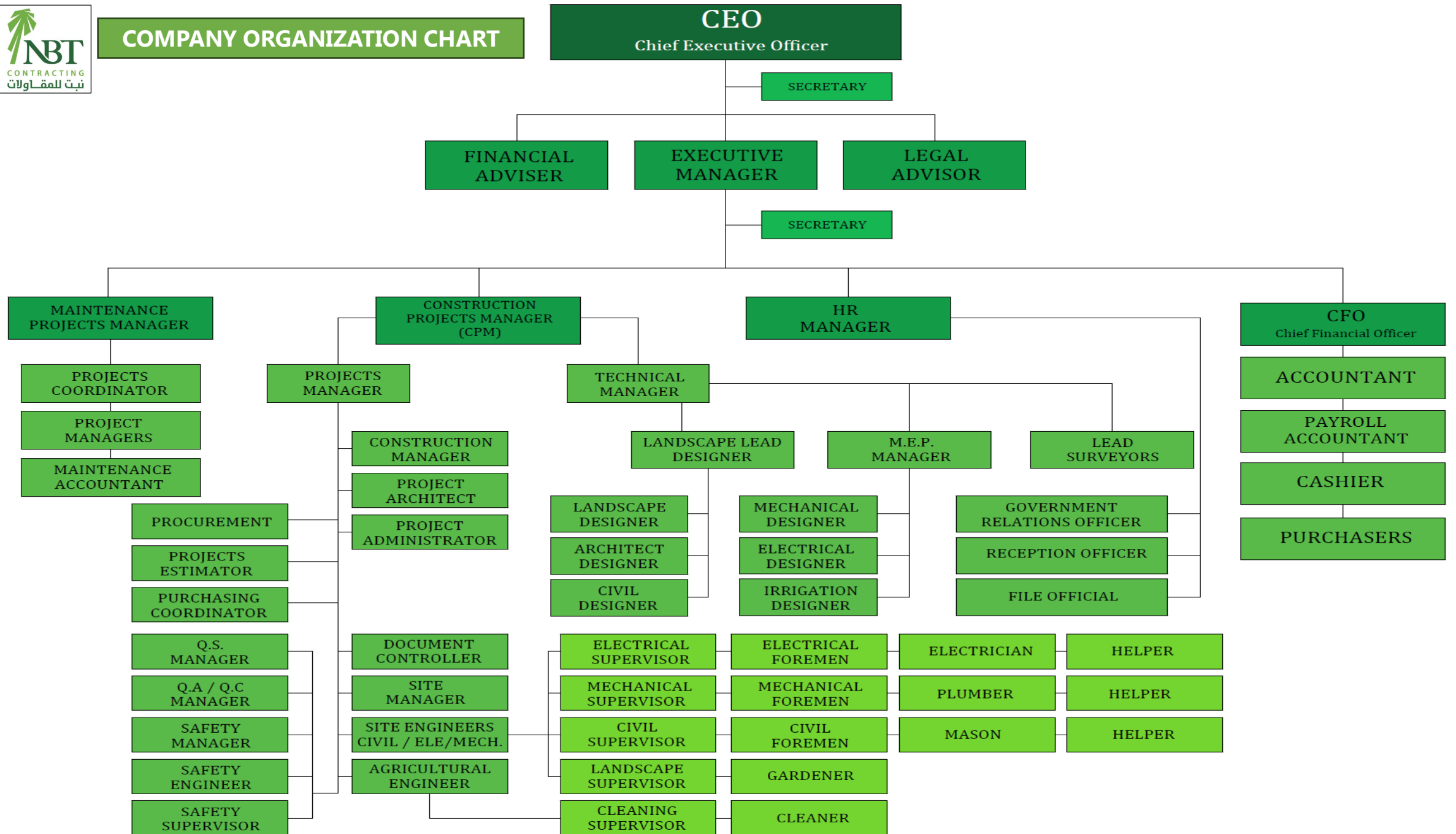
NBT Contracting Est. Vicinity map



Our office is located above Wayne's coffee, and the entrance will be at the back area

Building No. 5045 Prince Turki Bin Abdulaziz Al Awwal Street, Al Nakheel
District Postal Code 12391 Riyadh Kingdom of Saudi Arabia

COMPANY ORGANIZATION CHART





COMPANY DOCUMENTS

CONTRACTING

المقاولات

Company Documents

رؤية
2030
المملكة العربية السعودية
VISION
2030
KINGDOM OF SAUDI ARABIA

مؤسسة نبت للمقاولات



السجل التجاري: 1010209099

MCgovSA
www.mc.gov.sa

وزارة التجارة
Ministry of Commerce



رمزك التجاري QR Code

من خلاله يمكنك التحقق المباشر من المعلومات:

- السجل التجاري
- شهادة السعودة
- شهادة الزكاة
- رخصة البلدية
- برنامج نطاقات
- الغرفة التجارية

Company Documents

الرقم الموحد : ٧٠٠٢٤٤٠٩٤٤
رقم المنشأة : ١٠١٠٢٠٩٠٩٩
التاريخ : ١٤٢٦/٠٤/٠٣ هـ

شهادة تسجيل مؤسسة فردية Individual Establishment Registration Certificate

وزارة التجارة
Ministry of Commerce



الاسم التجاري للمؤسسة : مؤسسة نبت للمقاولات

مركزها الرئيسي : *****

هاتف : ١٣٥١٦ الرمز البريدي : ص.ب :

إسم التاجر: ناصر سالم عبدالله القحطاني الجنسية : سعودي تاريخ الميلاد : ١٣٩٣ هـ

رقم السجل المدني - الإقامة: ١٠١٤٨٥١٠٣٢ تاريخه : ١٤٤٠/١١/١١ هـ مصدرة: احوال الدرعية

رقم الحفيظة - الجواز: تاريخه : مصدرة:

النشاط : للاطلاع على بيانات الأنشطة الرجاء مسح الرمز التجاري

رأس المال : ٢٥,٠٠٠ خمسة و عشرون ألف ريال فقط لا غير

إسم المدير أو الوكيل المفوض : ناصر سالم عبدالله القحطاني

الجنسية : سعودي تاريخ الميلاد: ١٣٩٣ هـ

رقم السجل المدني - الإقامة: ١٠١٤٨٥١٠٣٢ تاريخه : ١٤٤٠/١١/١١ هـ مصدرة: احوال الدرعية

سلطات المدير:

يشهد مكتب السجل التجاري بمدينة الرياض

بأنه تم تسجيل المؤسسة المذكورة أعلاه بمدينة الرياض

وتنتهي صلاحية الشهادات في : ١٤٤٧/٠٧/٢١ هـ

بموجب الإيصال رقم : ٤٩١٣٦١٠

وتاريخ : ١٤٤١/٠٩/٠٤ هـ



يمكن التحقق من صحة هذه الشهادة بالدخول على : <http://qr.mc.gov.sa>

Kingdom of Saudi Arabia | الرياض 11162 | 966 11 294 4444 | MC.gov.sa | المملكة العربية السعودية |

Company Documents



السادسة/ مؤسسة نبت للمقاولات

نهنكم بدخول عالم الأعمال التجارية وإصدار سجلكم التجاري، ونتطلع أن يساهم هذا السجل في تحقيق تطعاتكم، وأن يكتب الله لكم التوفيق والنجاح في عملكم التجاري وأن تكون شريكاً في تعزيز اقتصاد المملكة العربية السعودية.

يسرنا إبلاغكم بأن رقم منشآتكم الموحد هو ٧٠٠٢٤٤٠٩٤٤ وقد تم ربطه بالخدمات الحكومية التي ستحتاجها مستقبلاً. وهي على النحو التالي:

| الرقم: | رقم سجلكم التجاري للمنشأة | وزارة التجارة Ministry of Commerce |
|-------------|---|---|
| ١٠١٠٢٠٩٩٩ | رقم منشآتكم لدى وزارة الموارد البشرية والتنمية الاجتماعية | وزارة العمل Ministry of Human Resources Development |
| ١٨٦٢٨٩ | تم تسجيل منشآتكم مجاناً لمدة سنة في خدمة واصل التجاري | SPIN سجل الأعمال Business Register |
| ١٤٩٨٩٤٩٨٧١١ | رقم منشآتكم لدى هيئة الزكاة والضريبة والجمارك | هيئة الزكاة والضريبة والجمارك Zakat, Tax and Customs Authority |
| ٣٠٠١٧٠٧١٣ | رقم منشآتكم لدى المؤسسة العامة للتأمينات الاجتماعية | المؤسسة العامة للتأمينات الاجتماعية General Authority of Social Security |
| تحت الجبلة | رقم منشآتكم لدى الغرفة التجارية. | الغرفة التجارية Chamber of Commerce |
| ١١٣٣٨٦ | رقم رخصة "بلدية" فورية (في حال اختياركم) | بلدي balady |



يُفتح تطبيق "توافذ منشآت" العديد من الخدمات الممكنة لك في عالم الأعمال ومنها الحصول على الإرشاد والاستشارات، تطبيق "توافذ منشآت" بوابة دخولك إلى عالم الأعمال، <https://www.monshaat.gov.sa/hawafth>



ويمكنك فتح حساب بنكي دون الحاجة إلى أي أختام لمنشأتك

كما جمعنا لك كافة الأنظمة واللوائح بلغة بسيطة في دليل التاجر لتمارس عملك التجاري بسهولة mc.gov.sa/trader/guide

Company Documents



TIN 3001707713 الرقم المميز

Certificate No. 100231079520988 رقم الشهادة

Certificate date 22/08/2017 تاريخ الشهادة



هيئة الزكاة والضريبة والجمارك
Zakat, Tax and Customs Authority

المملكة العربية السعودية
Kingdom of Saudi Arabia

شهادة تسجيل في ضريبة القيمة المضافة

VAT Registration Certificate

تشهد هيئة الزكاة والضريبة والجمارك بأن المكلّف أدناه مسجل في ضريبة القيمة المضافة بتاريخ ٢٠١٧ / ٨ / ٢٢ م

The Zakat, Tax and Customs Authority certifies that taxpayer below is VAT registered on 22/08/2017 AD

| | | |
|------------------------------|---|---|
| Taxpayer Name | مؤسسة نبت للمقاولات | اسم المكلّف |
| VAT Registration Number | 300170771300003 | رقم التسجيل الضريبي |
| Effective Registration Date | 2018/01/01 | تاريخ نفاذ التسجيل |
| Taxpayer Address | الرياض، النخيل، الامير تركي بن عبدالعزيز الاول، 12391 | عنوان المكلّف |
| CR / License Contact / ID No | 1010209099 | رقم السجل التجاري / الرخصة / العقد / الهوية |
| Tax Period | شهري - Monthly | الفترة الضريبية |
| First Filing due date | 2018/02/28 | تاريخ استحقاق أول إقرار ضريبي |

ملاحظة: كعملاء مسجلين في ضريبة القيمة المضافة، لا يجوز لكم تحصيل ضريبة القيمة المضافة من عملائكم قبل تاريخ نفاذ التسجيل في الضريبة. و في حال تبين غير ذلك ستقوم هيئة الزكاة والضريبة والجمارك بتنفيذ الغرامات المستحقة

Note: As a VAT registered taxpayer, you are not allowed to collect VAT from your customers prior to the effective date of the tax registration. If otherwise approved, The ZAKAT, Tax and Customs Authority will impose the applicable penalties




zатca.gov.sa 19993 @zatca_sa



TIN 3001707713 الرقم المميز

Certificate No. 100231079520988 رقم الشهادة

Certificate date 22/08/2017 تاريخ الشهادة



هيئة الزكاة والضريبة والجمارك
Zakat, Tax and Customs Authority

المملكة العربية السعودية
Kingdom of Saudi Arabia

قائمة فروع المكلّف

List of Taxpayer Branches

| رقم سجل تجاري / رخصة / عقد CR/ License / Contract Number | اسم الفرع Branch Name | المدينة City |
|---|--------------------------|-----------------|
| 1010619131 | مؤسسة إنشاءات للمقاولات | |




zатca.gov.sa 19993 @zatca_sa

**THANK YOU VERY
MUCH!**



NBT CONTRACTING EST.

C.R.:1010209099

P.O. BOX: 58518 RUH 11515-K.S.A

Tel: +966114613332/+966112388838

Email us at: info@nbt-ksa.com/project@nbt-ksa.com